

The Necessity of Evaluating Industrial Landscapes and Land Uses:

Creating an Industrial Inventory for Tacoma, WA

Taylor Jones

University of Washington Tacoma

In Tacoma's post-ASARCO landscape, a mistrust in heavy industry has created splintered visions of what Tacoma's identity should be. This has resulted in the emergence of voices that appear to call for a halt of new industrial activity in Tacoma, reflected in the cancellation of a proposed methanol plant in 2016 and recent pushback against a new liquefied natural gas facility. This attitude toward industry recalls Gandy's (2003) concept of invisible urbanism, where, referencing Thomas H. Garver, he notes "The products must still be made, the power generated, the water pumped, and the sewage treated, but let it be done elsewhere, and invisibly" (p. 207). Many scholars agree that industry does indeed have a place in cities, but a lack of research exists on how that translates to land use policy and placemaking practices. This paper will discuss why researching industrial areas and land uses in cities is important, as well as review current research being undertaken regarding Tacoma, Washington's industrial landscape in particular.

### **Considering the historicity of regional economies**

Tacoma's industrial past should be taken into account when considering possibilities for its industrial future. Young (2015), quoting Geddes, explains "To realize the geographic and historic factors...is thus the first step to comprehension of the present, one indispensable to any attempt at the scientific forecast of the future" (p. 78). History is not merely an accumulation of events, but an ongoing process that directly leads to present conditions. For example, present distrust in heavy industry in Tacoma, which is a result of still dealing with pollutants from the long-closed ASARCO plant, will dictate the reception of future industry in the city. Young (2015) utilizes Oregon as a case study to distinguish between the resource-based economy of the Old West and the service and technology driven economy of the New West, discussing the

state's shift to "...an economy based on advanced manufacturing, sustainable technologies, and conservation" in response to its high unemployment rate and record of economic underperformance (p. 77). To explore industrial activity in the context of Oregon's overall economic development, Young (2015) introduces two competing approaches: Fredrick Turner's Frontier Thesis and Harold Innis's Staples Thesis.

The Frontier Thesis offers an "...evolutionary theory of western North American development where social and ecological forces forged a new continental society" and posits that "...former frontier regions in the American west should exhibit independent, innovative, self-reliant economies derivative of their frontier experience" (Young, 2015, p. 79). In contrast, Innis's Staples Thesis "... contended that reliance on staples resulted in an economy built upon unstable foundations" and it is dangerous for regional development to be "...shaped by exploitation of its resources as staples for distant metropolises" (Young, 2015, p. 80). This perception of instability was echoed in resistance to Tacoma's failed methanol plant proposal when there was criticism about it being a Chinese-owned facility that was intended to provide methanol for China. While greener industries, which the methanol plant was marketed as being, provide diversification, innovative technologies and 'green' labels "...have little meaning if they keep a region dependent on external capital and markets" (Young, 2015, p. 85). In attempt to balance the implications of these two theses, Oregon has integrated modern green practices into existing industries to help strengthen the regional economy, simultaneously exhibiting the innovation Turner describes and avoiding the reliance on staples which Innis warns against (Young, 2015). While the Frontier Thesis and Staples Thesis help guide discussions about the form of industry that will foster economic resilience in cities, current approaches to planning may fail to adequately address the role that industrial land uses play in cities.

### **Tensions between smart growth and urban industrial development**

Leigh & Hoelzel (2012) have observed that smart growth has a policy blind side that privileges non-industrial economic development in urban areas and “...fails to recognize connections between urban industrial land and the activities it supports with smart growth goals of limiting sprawl and revitalizing central cities” (p. 87). The overarching problem is that the pursuit of smart growth strategies, such as the adoption of policies that limit sprawl, is associated with rezoning and the conversion of low-cost industrial land to mixed-use commercial and residential land (Leigh & Hoelzel, 2012). This tension reveals a “...need to coordinate urban industrial development practices with other mainstay smart growth activities” (Leigh & Hoelzel, 2012, p. 87). Omitting industrial development considerations from smart growth discussions has detrimental implications in terms of economic vulnerability, resiliency, equity, and environmental sustainability.

Privileging the non-industrial economic development that is promoted in smart growth guidelines effectively narrows a city’s economic case and “...may inadvertently place them in vulnerable positions during economic recessions and slow economic recovery” (Leigh & Hoelzel, 2012, p. 88). Ferm & Jones (2016) make similar arguments about the importance of urban industrial development, noting that industry helps cities be “...economically and social resilient” (p. 1). Lester, Kaza, & Kirk (2013) speak to the matter of equity, arguing “The restructuring of urban economies away from manufacturing and toward services results in highly bifurcated labor markets that generate few moderate-income jobs for blue-collar workers. In addition, the growth of high technology and skilled service sector service jobs in cities has generated new demand for urban living, driving up housing prices” (p. 295). Consequently, this creates pressure to convert industrial land into land zoned for residential or commercial uses



(Lester, Kaza, & Kirk, 2013). It is also important to note that manufacturing jobs provide employment opportunities that don't require advanced degrees, "...making these jobs an attractive match for urban areas with high unemployment among lower-skilled workers" (Lester, Kaza, & Kirk, 2013, p. 297). Leigh and Hoelzel (2012) expand upon this argument, noting "...industrial activity typically produces higher wages and more jobs than commercial activity" and that manufacturing is "...the largest export sector and [...] has the highest economic multiplier of any sector" (p. 89). From an environmental standpoint, industry in cities "...reduces travel distances between production, services and markets," which effectively "...reduce[s] congestion and carbon emission from (mostly diesel) vehicles used by such companies" (Ferm & Jones, 2016, p. 8).

The failure of policy guides, such as the American Planning Association's *Growing Smart Legislative Guidebook*, to incorporate industrial land use issues into best practices ignores cities' inherent reliance on industrial lands. This effectively supports the concepts of invisible urbanism and "back street businesses," a San Francisco term assigned to "an industry that often exists behind the scenes, but provides thousands of well-paying jobs to local residents and essential goods and services to Main Street businesses, local residents and the larger economy" (Ferm & Jones, 2016, p. 7). Cities depend upon industries to function; industries "...provide goods and services to its businesses and residents, [...] deal with its waste, [and] provide materials for its construction" (Ferm & Jones, 2016, p. 6). While residents may not wish to encounter the physicality of these industries, it does not mean that they are not reliant on them on a daily basis.

One way in which policy guides privilege non-industrial industries is by encouraging the formation of public-private partnerships and the creation of industrial land inventories to assist

private developers in rezoning industrial land, rather than revitalizing it (Leigh & Hoelzel, 2012). This is evident in Seattle, where industrial land is increasingly threatened by “...speculative real estate development driven by demand for residential and commercial land” (Leigh & Hoelzel, 2012, p. 92). Comparatively, the inventory of Tacoma’s industrial business that was created for this body of research is intended to guide discussions about future industrial activity in the city, rather than facilitate its displacement. Leigh & Hoelzel (2012) attribute some of these practices to the fact that “...city planning tends to be conducted in proverbial silos. In one silo, planners pursue industrial land protection and firm attraction and retention through local industrial policies. In another, planners focus on redeveloping industrial land to meet local demands for other uses” (p. 90). This fragmentation of pursuits facilitates the construction of policy that presents an inherently conflicted vision for a city. Since “...industry make for a more interesting and vibrant city,” the perception of urban industrial activity warrants more study (Ferm & Jones, 2018, p. 8).

### **Crafting Tacoma’s Industrial Inventory**

The dearth of planning guidance for industrial development effectively pits it “...against mixed-use, retail, commercial, office, high-technology, and residential development,” producing an unnecessary and detrimental binary in economic development that results in a lack of economic diversity and resilience (Leigh & Hoelzel, 2012, p. 90). To assess future potential for industrial development in Tacoma, it is first necessary to determine what currently exists. Researching present conditions “...enable[s] an examination of [...] the ‘civic future,’ allowing planners to address the immediate as well as ‘remoter and higher issues’ facing a region” (Young, 2015, p. 78). This emphasis on the importance of present conditions serves as the

framework guiding the creation of Tacoma's industrial inventory that is included with this paper. Over the course of this research, four maps were produced using GIS software: a historical basemap with a current parcel overlay indicated changes in industrial zoning, a map demonstrating the general forms of industrial land uses (manufacturing, resource production/extraction; transportation, communication, and utilities; and undeveloped land and water areas) that exist within the city, a map illustrating the frequency of parcels with industrial and non-industrial land uses within primary industrial zones, and a map specifying what businesses with industrial land uses operate within Tacoma. Continued future research will include a closer examination of specific industrial business and conducting interviews that address public perception of industrial activity and public reception of industrial businesses in Tacoma.

Currently, "...planning's professional body and its key academic research neither emphasize positive benefits of industrial development for urban revitalization, not do they make connections with local industrial planning in the smart growth movement" (Leigh & Hoelzel, 2012, p. 89). In order to fully incorporate sustainable practices into planning policy and land use code, it is essential to address the particular role industrial development plays in cities, including a thorough assessment of its industrial past and an inventory of its present conditions. It is necessary for cities and planners to "...strategically and proactively plan for industry in the city, to experiment with innovative ways of integrating it with other city uses, whilst protecting land for industry, where required" (Ferm & Jones, 2016, p. 1).

## References

- Ferm, J. & Jones, E. (2016). Beyond the post-industrial city: Valuing and planning for industry in London. *Urban Studies*, 1-19. doi: 10.1177/0042098016668778
- Gandy, M. (2003). *Concrete and clay: Reworking nature in New York City*. Cambridge, MA: The MIT Press.
- Leigh, N. G. & Hoelzel, N. Z. (2012). Smart growth's blind side. *Journal of the American Planning Association*, (78)1, 87-103. doi: 10.1080/01944363.2011.645274
- Lester, T. W., Kaza, N., & Kirk, S. (2013). Making room for manufacturing: Understanding industrial land conversion in cities. *Journal of the American Planning Association*, (79)4, 295-313. doi: 10.1080/01944363.2014.915369
- Young, R. F. (2015). The Oregon way: Planning a sustainable economy in the American west. *Journal of Planning Education and Research*, (16)1, 76-89. doi: 10.1177/0739456X15595866

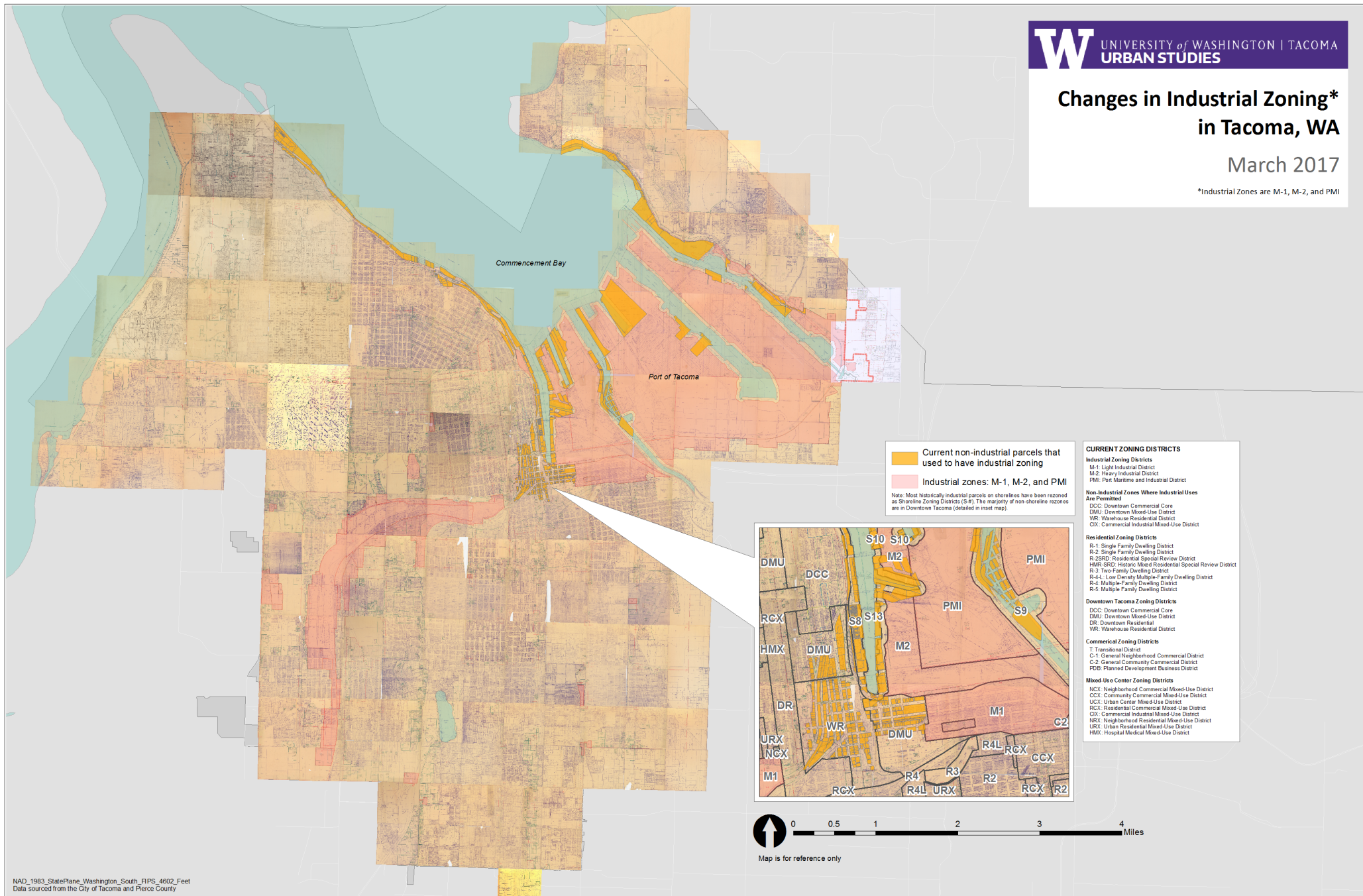
## LAND USE KEY

Abstract Description (County)	State Equivalent Code and Description			
FOOD MFG	21	Food and kindred products		
APPAREL & FINISH MFG	23	Apparel and other finished products made from fabrics, leather, and similar materials		
LUMBER & WOOD MFG	24	Lumber and wood products (except furniture)		
FURNITURE MFG	25	Furniture and fixtures		
PAPER PROD MFG	26	Paper and allied products		
PRINTING PUBLISHING	27	Printing and publishing		
CHEMICAL MFG	28	Chemicals		
PETRO INDUSTRIES	29	Petroleum refining and related industries		
STONE/CLAY/GLASS MFG	32	Stone, clay, and glass products		
PRIM METAL INDUSTRIES	33	Primary metal industries		
FAB METAL PRODUCTS	34	Fabricated metal products		
SCI INSTR PHOTO OPTICAL WATCH MFG	35	Prof. scientific, and controlling instruments; photographic and optical goods; watch & clock mfg		
MISC MFG	39	Miscellaneous manufacturing		
UTILITIES	48	Utilities		
OTHER TRANS UTILITIES	49	Other transportation, communication, and utilities not classified elsewhere		
AG NOT CURRENT USE	81	Agriculture (not classified under current use law)		
HORTICULTURE SPECIALTIES	81	Agriculture (not classified under current use law)		
AG RELATED ACTIVITIES	82	Agriculture related activities		
MINING ACTIVITIES	85	Mining activities and related services		
QUARRY SAND ROCK	85	Mining activities and related services		
MARIJUANA GROW OPERATIONS	86	Marijuana grow operations		
VACANT LAND UNDEVELOPED	91	Undeveloped land		
RES NO PERK VAC LND REQ DOC	91	Undeveloped land		
VAC LAND BLDG RESTRICT DOC REQ	91	Undeveloped land		
WETLANDS REC	91	Undeveloped land		
RES LND WITH IMPROV LAND VAL ONLY	91	Undeveloped land		
RES LND WITH COMM BUILDING	91	Undeveloped land		
RES INDIAN RESERV LND	91	Undeveloped land		
VAC LND MAJOR PROBLEM	91	Undeveloped land		
COMM VAC LAND	91	Undeveloped land		
COMM LND WITH IMPROV LAND VAL ONLY	91	Undeveloped land		
VAC INDUSTRIAL LAND	91	Undeveloped land		
IND VAC LND SP ENVIR APPR FILED	91	Undeveloped land		
IND INDIAN RESERV LND	91	Undeveloped land		
IND LND WITH IMPROV LAND VAL ONLY	91	Undeveloped land		
Manufacturing	Transportation, Communication, Utilities		Resource Production/Extraction	Undeveloped Areas

# Changes in Industrial Zoning\* in Tacoma, WA

March 2017

\*Industrial Zones are M-1, M-2, and PMI



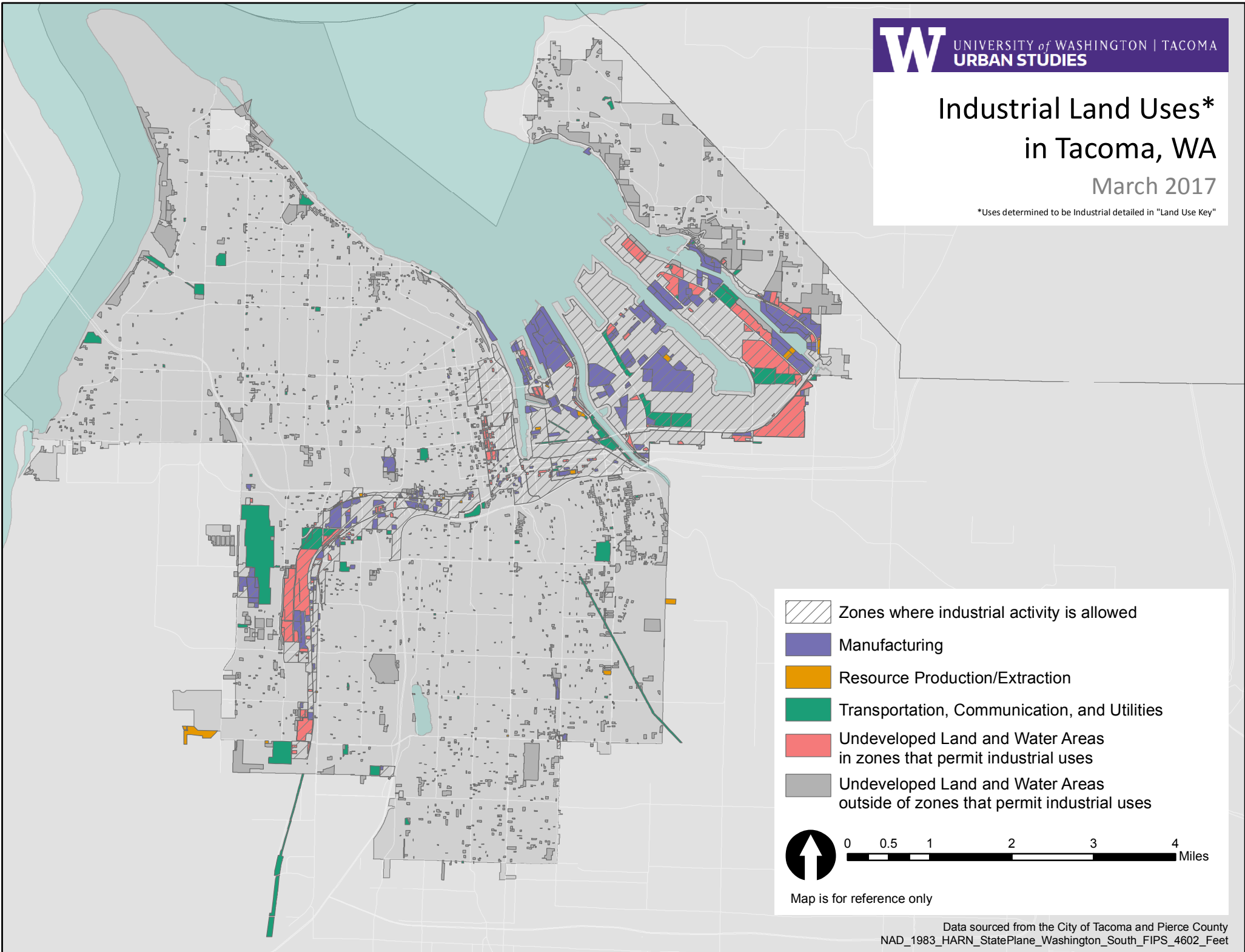




# Industrial Land Uses\* in Tacoma, WA

March 2017

\*Uses determined to be Industrial detailed in "Land Use Key"





UNIVERSITY of WASHINGTON | TACOMA  
URBAN STUDIES

# Land Uses in M-1, M-2, and PMI Zones in Tacoma, WA

March 2017

- Parcels with industrial land uses\*
- Parcels with non-industrial land uses\*

\*Uses determined to be Industrial detailed in "Land Use Key"



0 0.35 0.7 1.4 2.1 2.8 Miles

Map is for reference only

Data sourced from the City of Tacoma and Pierce County  
NAD\_1983\_HARN\_StatePlane\_Washington\_South\_FIPS\_4602\_Feet



## Frequency of Parcels in M-1, M-2, and PMI Zones by Land Use

Landuse Description	Count
APPAREL & FINISH MFG	1
CEMETERIES	1
COMM LND WITH IMPROV LAND VAL ONLY	1
CONVEN STORE MAY HAVE GAS	1
CU OPEN SPACE RCW 84.34 CURRENT USE	1
DRAINFLDS CATCH BASINS	1
ENTERTAINMENT BARS	1
GAS STATION SERV GAR	1
IND VAC LND SP ENVIR APPR FILED	1
MILITARY BASES	1
NURSING CONVALESCENT HOSPITALS	1
OLDER BUSINESS DIST	1
OTHER RESOURCE PROD	1
OTHER UNDEVEL LAND	1
PERSONAL SERVICES	1
REFRIG WAREHOUSE	1
RES LND WITH IMPROV LAND VAL ONLY	1
RETAIL HOME FURNISHINGS	1
SCI INSTR PHOTO OPTICAL WATCH MFG	1
TRIPLEX 3 UNITS	1
BANKS	2
CAR WASH	2
CREDIT UNIONS	2
FAST FOOD	2
IND INDIAN RESERV LND	2
MEDICAL OFFICES SERVICES	2
NGB COMMUNITY SC	2
QUARRY SAND ROCK	2
RR PASSENGER TERMINALS	2
SEC SCHOOLS 7 TO 12	2
VOC TRADE SCHOOLS	2
DENTAL SERVICES	3
GAS STATION CASHIER BOOTH	3
HOTELS/MOTELS	3
MARINAS	3
OFF INSURANCE REAL ESTATE FINANCE	3
OTHER RESIDENTIAL	3
REC ACTIVITIES	3
VEHICLE TRANSPORTATION	3
AG RELATED ACTIVITIES	4
GRNBELT COMMON AREAS	4
MARIJUANA GROW OPERATIONS	4
OTHER PUB ASSEMBLY	4
PRINTING PUBLISHING	4
RELIGIOUS SERVICES	4
TAVERNS	4
DUPLEX 2 UNITS	5
FOURPLEX 4 UNITS	5
FUELING STATIONS	5
INSTITUTIONAL LODGING	5
RETIREMENT HOME	5

## Frequency of Parcels in M-1, M-2, and PMI Zones by Land Use

UNKNOWN	5
FOOD MFG	6
FURNITURE MFG	6
STREET RIGHT OF WAY	6
TRANSIT RR RIGHT OF WAY	6
AUTO ACCESSORIES RETAIL	7
IND LND WITH IMPROV LAND VAL ONLY	7
RETAIL STAND ALONE	7
FIRE STATIONS	8
GAS STATION MINI MART	8
OTHER RETAIL TRADE	8
PAPER PROD MFG	8
RESTAURANT	8
STONE/CLAY/GLASS MFG	8
MINING ACTIVITIES	9
RENTAL EQUIP AUTO TRUCK	9
VETERINARIAN SERVICES	9
PROFESSIONAL SERVICES	10
HORTICULTURAL SPECIALTIES	11
PRISONS	11
LNDRY & DRY CLEANING SERV	12
GEN MERCHANDISE RETAIL TRADE	13
USED CAR LOTS ONLY RETAIL	13
MINI WAREHOUSING	14
COMM LND WITH SFR	16
MULTI FAM APTS 5 UNITS OR MORE	17
AUTO DLR NEW AND USED RETAIL	18
BUSINESS SERVICES	18
MARINE CRAFT TRANSPORTATION	18
OTHER TRANS UTILITIES	19
PARKS	19
VACANT LAND UNDEVELOPED	21
MISC OFFICE SPACE	23
VAC LND MAJOR PROBLEM	23
PRIM METAL INDUSTRIES	24
BLDG MTRL FARM EQUIP RETAIL	26
GOVERNMENTAL SERVICES	26
AUTO PARKING	29
REPAIR SERVICES	31
CHEMICAL MFG	34
PETRO INDUSTRIES	35
MISC SERVICES	39
COMM VAC LAND	40
UTILITIES	45
LUMBER & WOOD MFG	46
WAREHOUSE CONDO	48
AUTO REPAIR SERVICES	53
OP PROP RR RIGHT OF WAY	54
MISC MFG	56
SINGLE FAMILY DWELLING	56
FAB METAL PRODUCTS	68
WHOLESALE TRADE	77

### Frequency of Parcels in M-1, M-2, and PMI Zones by Land Use

CONTRACTOR SERVICES	96
VAC INDUSTRIAL LAND	180
GEN WAREHOUSING STORAGE	205

## Frequency of Parcels with Non-Industrial Uses in M-1, M-2, and PMI Zones

Landuse Description	Count
CEMETERIES	1
CONVEN STORE MAY HAVE GAS	1
CU OPEN SPACE RCW 84.34 CURRENT USE	1
DRAINFLDS CATCH BASINS	1
ENTERTAINMENT BARS	1
GAS STATION SERV GAR	1
MILITARY BASES	1
NURSING CONVALESCENT HOSPITALS	1
OLDER BUSINESS DIST	1
OTHER RESOURCE PROD	1
OTHER UNDEVEL LAND	1
PERSONAL SERVICES	1
REFRIG WAREHOUSE	1
RETAIL HOME FURNISHINGS	1
TRIPLEX 3 UNITS	1
BANKS	2
CAR WASH	2
CREDIT UNIONS	2
FAST FOOD	2
MEDICAL OFFICES SERVICES	2
NGB COMMUNITY SC	2
RR PASSENGER TERMINALS	2
SEC SCHOOLS 7 TO 12	2
VOC TRADE SCHOOLS	2
DENTAL SERVICES	3
GAS STATION CASHIER BOOTH	3
HOTELS/MOTELS	3
MARINAS	3
OFF INSURANCE REAL ESTATE FINANCE	3
OTHER RESIDENTIAL	3
REC ACTIVITIES	3
VEHICLE TRANSPORTATION	3
GRNBELT COMMON AREAS	4
OTHER PUB ASSEMBLY	4
RELIGIOUS SERVICES	4
TAVERNS	4
DUPLEX 2 UNITS	5
FOURPLEX 4 UNITS	5
FUELING STATIONS	5
INSTITUTIONAL LODGING	5
RETIREMENT HOME	5
UNKNOWN	5
STREET RIGHT OF WAY	6
TRANSIT RR RIGHT OF WAY	6
AUTO ACCESSORIES RETAIL	7
RETAIL STAND ALONE	7
FIRE STATIONS	8
GAS STATION MINI MART	8
OTHER RETAIL TRADE	8
RESTAURANT	8
RENTAL EQUIP AUTO TRUCK	9

## Frequency of Parcels with Non-Industrial Uses in M-1, M-2, and PMI Zones

VETERINARIAN SERVICES	9
PROFESSIONAL SERVICES	10
PRISONS	11
LNDRY & DRY CLEANING SERV	12
GEN MERCHANDISE RETAIL TRADE	13
USED CAR LOTS ONLY RETAIL	13
MINI WAREHOUSING	14
COMM LND WITH SFR	16
MULTI FAM APTS 5 UNITS OR MORE	17
AUTO DLR NEW AND USED RETAIL	18
BUSINESS SERVICES	18
MARINE CRAFT TRANSPORTATION	18
PARKS	19
MISC OFFICE SPACE	23
BLDG MTRL FARM EQUIP RETAIL	26
GOVERNMENTAL SERVICES	26
AUTO PARKING	29
REPAIR SERVICES	31
MISC SERVICES	39
WAREHOUSE CONDO	48
AUTO REPAIR SERVICES	53
OP PROP RR RIGHT OF WAY	54
SINGLE FAMILY DWELLING	56
WHOLESALE TRADE	77
CONTRACTOR SERVICES	96
GEN WAREHOUSING STORAGE	205

### Businesses with Industrial Land Uses in M-1, M-2, and PMI Zones

Landuse Description	Business Name	Frequency
AG RELATED ACTIVITIES		2
AG RELATED ACTIVITIES	FEED COMMODITIES	2
APPAREL & FINISH MFG	HARMON F S BLDGS 1 - 4	1
CHEMICAL MFG		11
CHEMICAL MFG	AIRGAS NOR-PAC	1
CHEMICAL MFG	AIRGAS NOR-PAC INC	1
CHEMICAL MFG	BN INDUST PARK	4
CHEMICAL MFG	DARLING INTERNATIONAL INC TI #16	1
CHEMICAL MFG	DARLING INTERNATIONAL INC TI #16	2
CHEMICAL MFG	EMERALD SERVICES TI #84	2
CHEMICAL MFG	GENERAL PLASTIC MFG CO	1
CHEMICAL MFG	JONES CHEMICAL	1
CHEMICAL MFG	OLIN CHLOR ALKALI	1
CHEMICAL MFG	OLYMPIC CHEMICAL CORP/PAC NORTHERN OIL	1
CHEMICAL MFG	PRAXAIR	2
CHEMICAL MFG	REVCHEM PLASTICS INC	3
CHEMICAL MFG	SUPER CELL LLC	2
CHEMICAL MFG	SUPERLON PLASTICS	1
COMM LND WITH IMPROV LAND VAL ONLY	TACOMA MUNICIPAL WATER WORKS	1
COMM VAC LAND		21
COMM VAC LAND	ALL WAYS AIR CONTROL PARKING	1
COMM VAC LAND	ALL WAYS AIR CONTROL REAR PARKING	1
COMM VAC LAND	CITY OF TACOMA	1
COMM VAC LAND	CITY OF TACOMA/FILLED BY LIGE DICKSON CO	2
COMM VAC LAND	EMERSON COURTYARD II	1
COMM VAC LAND	LIGE DICKSON CO	4
COMM VAC LAND	LIGE DICKSON VAC LAND ASSEMBLGE	4
COMM VAC LAND	NIELSEN PACIFIC LTD	1
COMM VAC LAND	S TAC SWAMP	1
COMM VAC LAND	SEA PAC	1
COMM VAC LAND	SIGN BOARD ONLY	1
COMM VAC LAND	VALUE 4 SIGN ADVERTIZING	1
FAB METAL PRODUCTS		5
FAB METAL PRODUCTS	AEP SPAN - TI #8	2
FAB METAL PRODUCTS	AUTOMATED SYSTEMS OF TACOMA	4
FAB METAL PRODUCTS	BAY ENGINE	1
FAB METAL PRODUCTS	BRADKEN -ATLAS TI #24	1

## Businesses with Industrial Land Uses in M-1, M-2, and PMI Zones

FAB METAL PRODUCTS	BRADKEN -ATLAS TI #24 _____	6
FAB METAL PRODUCTS	CHRIS MARINE	1
FAB METAL PRODUCTS	COAST ENGINE LAND LEASE PORT OF TACOMA	1
FAB METAL PRODUCTS	COASTLINE FABRICATION	1
FAB METAL PRODUCTS	GENERAL METALS TI #20	1
FAB METAL PRODUCTS	GLOBE MACHINE û TI #21	2
FAB METAL PRODUCTS	J W BROWER HEATING AND AIR CONDITIONING	1
FAB METAL PRODUCTS	J&G MARINE SUPPLY/MASON MARINE SERVICES INC	1
FAB METAL PRODUCTS	JESSE ENGINEERING	1
FAB METAL PRODUCTS	LACKERMAYER TOOL AND GAUGE	5
FAB METAL PRODUCTS	MARTINAC SHIPBUILDING TI #36	3
FAB METAL PRODUCTS	MCGUIRE BEARING CO	1
FAB METAL PRODUCTS	NICHOLSON ENGINEERING	4
FAB METAL PRODUCTS	NORTHWEST STEEL AND PIPING	1
FAB METAL PRODUCTS	OLD GLOBE COMPANY LLC	1
FAB METAL PRODUCTS	PJ HUMMEL AND CO	1
FAB METAL PRODUCTS	PRECISION MACHINE WORKS - TACOMA TI #52	1
FAB METAL PRODUCTS	PRECISION PATTERN WORKS	1
FAB METAL PRODUCTS	SCHNEIDER & SIMPSON SHEET METAL	1
FAB METAL PRODUCTS	STREICH BROS	2
FAB METAL PRODUCTS	TACOMA METALS	1
FAB METAL PRODUCTS	TACOMA SCREW PRODUCTS	1
FAB METAL PRODUCTS	TACOMA STEEL SUPPLY	2
FAB METAL PRODUCTS	TAM ENGINEERING INDUSTRIAL (VARIOUS RENTALS)	1
FAB METAL PRODUCTS	TOOL GAGE & MACHINE WORKS INC & PMP	1
FAB METAL PRODUCTS	TOOL GAUGE & MACHINE WORKS & PMP	1
FAB METAL PRODUCTS	TOOL GAUGE & MACHINE WORKS INC & PMP	2
FAB METAL PRODUCTS	TOOL GAUGE & MACHINE WORKS INC& PMP	1
FAB METAL PRODUCTS	TOOL GAUGE AND MACHINE WORKS INC& PMP	1
FAB METAL PRODUCTS	TUTHILL CORP CABLE CRAFT DIVISION	3
FAB METAL PRODUCTS	WESTERN MACHINE WORKS	5
FOOD MFG		5
FOOD MFG	SUBWAY RESTAURANT AND SEAFOOD SALES	1
FURNITURE MFG		2
FURNITURE MFG	ANDY'S WOOD FUNITURE	1
FURNITURE MFG	LEGACY RENOVATIONS	1
FURNITURE MFG	SCHULTZ CABINET SHOP	1
FURNITURE MFG	TACOMA FIXTURE COMPANY	1

## Businesses with Industrial Land Uses in M-1, M-2, and PMI Zones

HORTICULTURAL SPECIALTIES		4
HORTICULTURAL SPECIALTIES	GREEN THUMB GARDEN SUPPLY SUPER STORE	2
HORTICULTURAL SPECIALTIES	LM DIGITAL	1
HORTICULTURAL SPECIALTIES	MAHONEY GREEN USE I-502	1
HORTICULTURAL SPECIALTIES	SPINNING HEADS	1
HORTICULTURAL SPECIALTIES	TRI ARC ELECTRIC	1
HORTICULTURAL SPECIALTIES	WEST COAST GROCERY	1
IND INDIAN RESERV LND		2
IND LND WITH IMPROV LAND VAL ONLY		2
IND LND WITH IMPROV LAND VAL ONLY	PORT OF TACOMA	1
IND LND WITH IMPROV LAND VAL ONLY	RPM MOTORS AND STORAGE YARD	1
IND LND WITH IMPROV LAND VAL ONLY	TACOMA MUNICIPAL WATER WORKS	3
IND VAC LND SP ENVIR APPR FILED	SIMPSON LANDING	1
LUMBER & WOOD MFG		12
LUMBER & WOOD MFG	BUFFELEN WOOD WORKING TI ACCT #12 _____	1
LUMBER & WOOD MFG	BUFFELEN WOODWORKING TI #12	1
LUMBER & WOOD MFG	DRY BOX USA CONTAINERS	1
LUMBER & WOOD MFG	EDMAN COMPANY	1
LUMBER & WOOD MFG	FOREST MARKETING ENTERPRISES	1
LUMBER & WOOD MFG	FRED TEBB & SONS TI #19	2
LUMBER & WOOD MFG	FRED TEBB AND SONS TI #19/APP PETROLEUM	1
LUMBER & WOOD MFG	HILLSDALE LUMBER /EARTH WISE ARCHITECTURAL SALVAGE	1
LUMBER & WOOD MFG	JOHNSONS MILLWORK	2
LUMBER & WOOD MFG	KUSTOM MATERIAL LAMINATES & CODEL INC	1
LUMBER & WOOD MFG	KUSTOM MATERIAL LAMINATES & CODEL INC _____	1
LUMBER & WOOD MFG	LIANGA PACIFIC û TI #31	1
LUMBER & WOOD MFG	LIANGA PACIFICû TI #31	1
LUMBER & WOOD MFG	MANKE LUMBER TI #35	4
LUMBER & WOOD MFG	MCFARLAND CASCADE TI #13	2
LUMBER & WOOD MFG	ORION MARINE	1
LUMBER & WOOD MFG	PLY-TRIM WEST POLY TRIM	1
LUMBER & WOOD MFG	PLY-TRIM WEST POLY TECH OVERLAYS	1
LUMBER & WOOD MFG	PLY TRIM WEST	2
LUMBER & WOOD MFG	RAINIER PLYWOOD	1
LUMBER & WOOD MFG	TACOMA INDUSTRIAL PARK	2
LUMBER & WOOD MFG	TPT US LIMITED	1
LUMBER & WOOD MFG	TRI PAK RELOAD, INC	2
LUMBER & WOOD MFG	WESTROCK KRAFT MILL TI #54	2



## Businesses with Industrial Land Uses in M-1, M-2, and PMI Zones

MARIJUANA GROW OPERATIONS		3
MARIJUANA GROW OPERATIONS	NORTHWEST WOODWORKING	1
MINING ACTIVITIES	HOLROYD BATCH PLANT	9
MISC MFG		17
MISC MFG	ANDREWS FIXTURE CO	2
MISC MFG	BELINA INTERIORS	1
MISC MFG	BRESHON MACHINE	1
MISC MFG	CUSTOM TURNING MACHINE SHOP	1
MISC MFG	EDUCATOR BUILDING	1
MISC MFG	GLOBE MACHINE	2
MISC MFG	ITI	1
MISC MFG	NORDLUND	1
MISC MFG	NORDLUND BOAT COMPANY	1
MISC MFG	NORTHWEST PIPE & STEEL	4
MISC MFG	NU TREAD INC	1
MISC MFG	P W PIPE	1
MISC MFG	PABCO BUILDING PRODUCTS LLC TI #46	1
MISC MFG	PLUMB SIGNS	1
MISC MFG	PREMIER PLASTICS	5
MISC MFG	PUGET SOUND CASKET	2
MISC MFG	PUGET SOUND CASKET PARKING	1
MISC MFG	PUGET SOUND CASKETPARKING	1
MISC MFG	QUICKRETE	1
MISC MFG	SAYBR CONSTRUCTION	1
MISC MFG	SEARS SERVICE CENTER BUILDING	1
MISC MFG	SOUND ENERGY SYSTEMS & SOUND ELECTRONICS	1
MISC MFG	TACOMA BOX	1
MISC MFG	TACOMA RECYCLE	5
MISC MFG	YELLOW CAB CO/LOWERY AUTO SALES	1
OTHER TRANS UTILITIES		3
OTHER TRANS UTILITIES	CARLISLE TRUCKING	4
OTHER TRANS UTILITIES	CITY/INTERMODAL YARD	1
OTHER TRANS UTILITIES	INTERMODAL YARD	3
OTHER TRANS UTILITIES	PORT OF TACOMA	1
OTHER TRANS UTILITIES	SOUND TRANSIT SERVICE GARAGE (EXEMPT)	1
OTHER TRANS UTILITIES	SPRINT SWITCH CENTER FACILITY	1
OTHER TRANS UTILITIES	TACOMA/TACOMA BELT LINE RAILROAD	1
OTHER TRANS UTILITIES	TACOMA/TACOMA BELTLINE RAILWAY	1

## Businesses with Industrial Land Uses in M-1, M-2, and PMI Zones

OTHER TRANS UTILITIES	UNION PACIFIC RR	1
OTHER TRANS UTILITIES	VCT (VENEER CHIP TRANSFER)	2
PAPER PROD MFG		1
PAPER PROD MFG	CARAUSTAR/TACOMA PAPERBOARD - TI #77	1
PAPER PROD MFG	CARAUSTAR/TACOMA PAPERBOARD - TI #77 _____	5
PAPER PROD MFG	WESTROCK KRAFT MILL TI #54	1
PETRO INDUSTRIES		3
PETRO INDUSTRIES	AMERICAN PETROLEUM ENVIRONMENTAL SVC	2
PETRO INDUSTRIES	APP	2
PETRO INDUSTRIES	CITY ROAD PLANT	1
PETRO INDUSTRIES	NUSTAR ENERGY	1
PETRO INDUSTRIES	PACIFIC NW PROCESSING	2
PETRO INDUSTRIES	PACIFIC NW TERMINALS TALLOW TANK FARM	1
PETRO INDUSTRIES	PHOENIX ENVIRONMENTAL	1
PETRO INDUSTRIES	STERICYCLE	6
PETRO INDUSTRIES	TARGA SOUND TERMINAL BOOSTER PUMP STATION	1
PETRO INDUSTRIES	TARGA SOUND TERMINAL OFFICE	1
PETRO INDUSTRIES	TARGA SOUND TERMINAL TI #57	2
PETRO INDUSTRIES	TARGA SOUND TERMINAL TI #57 _____	2
PETRO INDUSTRIES	TARGA SOUND TERMINAL TI# 57	1
PETRO INDUSTRIES	TARGA SOUND TERMINAL TI#57	1
PETRO INDUSTRIES	TARGA TI #57	2
PETRO INDUSTRIES	US OIL & REFINING - TI #62	5
PETRO INDUSTRIES	US OIL WATERFRONT - TI #63	1
PRIM METAL INDUSTRIES	ATLAS FOUNDRY TI#5 PARKING LOT & EMPL SHOWER BLDG	1
PRIM METAL INDUSTRIES	ATLAS TI #5 - CASTING YARD	1
PRIM METAL INDUSTRIES	ATLAS TI #5 - TRUCK GARAGE & SERVICE	1
PRIM METAL INDUSTRIES	ATLAS TI #5 (BOBCO PATTERN MFG LEASE)	1
PRIM METAL INDUSTRIES	ATLAS TI #5 EQUIP & TRUCK SERVICE CTR	1
PRIM METAL INDUSTRIES	ATLAS TI#5 EQUIPMENT YARD	1
PRIM METAL INDUSTRIES	BENNETT INDUSTRIES	1
PRIM METAL INDUSTRIES	BRADKEN-ATLAS TI #5	10
PRIM METAL INDUSTRIES	GENERAL METALS TI #20	4
PRIM METAL INDUSTRIES	JACK'S AUTO REPAIR	1
PRIM METAL INDUSTRIES	TACOMA METALS	1
PRIM METAL INDUSTRIES	US OIL & REFINING - TI #62	1
PRINTING PUBLISHING		2
PRINTING PUBLISHING	PIERCE COUNTY ANNEX WEST	2

## Businesses with Industrial Land Uses in M-1, M-2, and PMI Zones

QUARRY SAND ROCK		1
QUARRY SAND ROCK	GLACIER NORTHWEST - TACOMA TI #87	1
RES LND WITH IMPROV LAND VAL ONLY		1
SCI INSTR PHOTO OPTICAL WATCH MFG	HOYA CORP TI #37	1
STONE/CLAY/GLASS MFG		1
STONE/CLAY/GLASS MFG	CONCRETE TECHNOLOGY û TI #14	2
STONE/CLAY/GLASS MFG	GEORGIA PACIFIC GYPSUM TI #22	1
STONE/CLAY/GLASS MFG	GRAYMONT WESTERN (CONT LIME) û TI # 15	1
STONE/CLAY/GLASS MFG	KLEEN BLAST	2
STONE/CLAY/GLASS MFG	QUICKRETE	1
UTILITIES		8
UTILITIES	BONNEVILLE POWER	1
UTILITIES	BONNEVILLE POWER ADMIN	3
UTILITIES	CITY LIGHT SUB STATION & YARD	1
UTILITIES	CITY OF TACOMA	3
UTILITIES	CITY OF TACOMA RECOVERY & TRANSFER CENTER	5
UTILITIES	CITY OF TACOMA SEWER PLANT	13
UTILITIES	CITY OF TACOMA SUB STATION	1
UTILITIES	ENERGY CONTROL CENTER	1
UTILITIES	TACOMA CITY LIGHT	1
UTILITIES	TACOMA CITY LIGHT SUB STATION, EXEMPT	2
UTILITIES	TACOMA MUNICIPAL WATER WORKS	1
UTILITIES	TACOMA PUBLIC UTILITIES	3
UTILITIES	USA BONNEVILLE POWER ADMIN	2
VAC INDUSTRIAL LAND		124
VAC INDUSTRIAL LAND	BILLBOARD	1
VAC INDUSTRIAL LAND	BN INDUST PARK	4
VAC INDUSTRIAL LAND	BURLINGTON NO S TAC SWAMP	1
VAC INDUSTRIAL LAND	CITY OF TACOMA	2
VAC INDUSTRIAL LAND	CITY OF TACOMA-PUBLIC WORKS	1
VAC INDUSTRIAL LAND	CITY OF TACOMA WATER	1
VAC INDUSTRIAL LAND	ELECTRIC PANEL HOUSE	1
VAC INDUSTRIAL LAND	FIAT OF TACOMA	1
VAC INDUSTRIAL LAND	FORMER HOSMER ELECTRIC SUBSTAION	1
VAC INDUSTRIAL LAND	FORMER HOSMER ELECTRIC SUBSTATION	1
VAC INDUSTRIAL LAND	HAMPTON LBR	2
VAC INDUSTRIAL LAND	IND LAND AIRPORT S TAC SWAMP	1
VAC INDUSTRIAL LAND	KAISER ALUMINUM (FORMER)	4

### Businesses with Industrial Land Uses in M-1, M-2, and PMI Zones

VAC INDUSTRIAL LAND	LIGE DICKSON CO	4
VAC INDUSTRIAL LAND	MADISON BUSINESS PARK II	1
VAC INDUSTRIAL LAND	MANKE LUMBER TI #35	2
VAC INDUSTRIAL LAND	MARINE FLOATS	1
VAC INDUSTRIAL LAND	NALLEY VALLEY SELF STORAGE	2
VAC INDUSTRIAL LAND	NIELSON PACIFIC LTD	1
VAC INDUSTRIAL LAND	O P BURLINGTON NORTHERN	1
VAC INDUSTRIAL LAND	PIONEER BUILDER'S SUPPLY	1
VAC INDUSTRIAL LAND	PORT OF TACOMA	5
VAC INDUSTRIAL LAND	PORTLAND AT ST PAUL LLC	1
VAC INDUSTRIAL LAND	S TAC SWAMP	3
VAC INDUSTRIAL LAND	SOUTH TACOMA SWAMP	1
VAC INDUSTRIAL LAND	STAR RENTALS	2
VAC INDUSTRIAL LAND	TRI STATE ROOFING PARKING	1
VAC INDUSTRIAL LAND	USA TRUST PUYALLUP INDIAN TRIBE	4
VAC INDUSTRIAL LAND	VAC LAND	2
VAC INDUSTRIAL LAND	VACANT INDUSTRIAL LAND	2
VAC INDUSTRIAL LAND	VACANT LOT	1
VAC LND MAJOR PROBLEM		21
VAC LND MAJOR PROBLEM	CITY OF TACOMA	1
VAC LND MAJOR PROBLEM	TACOMA SCREW PRODUCTS	1
VACANT LAND UNDEVELOPED		19
VACANT LAND UNDEVELOPED	GARDEN & OUTBUILDING	1
VACANT LAND UNDEVELOPED	MANKE LUMBER	1

### Businesses with Non-Industrial Land Uses in M-1, M-2, and PMI Zones

Landuse Description	Business Name	Frequency
AUTO ACCESSORIES RETAIL		1
AUTO ACCESSORIES RETAIL	AUTOBAHN SPECIALISTS	1
AUTO ACCESSORIES RETAIL	BUDGET BATTERIES	4
AUTO ACCESSORIES RETAIL	T & T TIRE	1
AUTO DLR NEW AND USED RETAIL	BRUCE TITUS SUBARU	1
AUTO DLR NEW AND USED RETAIL	BUFF N STUFF BULKHEAD	1
AUTO DLR NEW AND USED RETAIL	CAR SALES LOT	1
AUTO DLR NEW AND USED RETAIL	FIAT OF TACOMA	1
AUTO DLR NEW AND USED RETAIL	GILCHRIST CHEVROLET	2
AUTO DLR NEW AND USED RETAIL	GRIOT'S GARAGE	1
AUTO DLR NEW AND USED RETAIL	LAKEWOOD FORD	1
AUTO DLR NEW AND USED RETAIL	TACOMA DODGE	1
AUTO DLR NEW AND USED RETAIL	TACOMA DODGE USED CAR SALES	1
AUTO DLR NEW AND USED RETAIL	TACOMA SUBARU BRUCE TITUS AUTOMOTIVE GROUP	1
AUTO DLR NEW AND USED RETAIL	TACOMA SUBARU/NISSAN	3
AUTO DLR NEW AND USED RETAIL	TITUS WILL FORD USED CAR DEALERSHIP	1
AUTO DLR NEW AND USED RETAIL	TITUS WILL TOYOTA SCION	2
AUTO DLR NEW AND USED RETAIL	TITUS WILL TOYOTA/FORD	1
AUTO PARKING		7
AUTO PARKING	CENTER ELECTRIC PARKING	1
AUTO PARKING	CITY OF TACOMA	4
AUTO PARKING	COMCAST	1
AUTO PARKING	DIAMOND PARKING	1
AUTO PARKING	DURHAM BUS BARN	1
AUTO PARKING	LIGE DICKSON	6
AUTO PARKING	PMP/TGM	3
AUTO PARKING	PMP/TMG	1
AUTO PARKING	RAIN CITY PLAZA	1
AUTO PARKING	SUPERIOR LINEN PARKING	1
AUTO PARKING	THANKS A LATTE	1
AUTO PARKING	TRANSPRO	1
AUTO REPAIR SERVICES		8
AUTO REPAIR SERVICES	#1 COLLISON & AUTO BODY	1
AUTO REPAIR SERVICES	A & E AUTOMOTIVE	1
AUTO REPAIR SERVICES	AFFORDABLE TRANSMISSION	1
AUTO REPAIR SERVICES	ALL TRANSMISSION AUTOMOTIVE & RAINIER WELLNESS CEN	1
AUTO REPAIR SERVICES	AMERICAN VIKING CLAIMS/DESTINATION CHRISTIAN CENTE	1

## Businesses with Non-Industrial Land Uses in M-1, M-2, and PMI Zones

AUTO REPAIR SERVICES	ANDY'S AUTO REPAIR	1
AUTO REPAIR SERVICES	AUTO TECH BODY SHOP	2
AUTO REPAIR SERVICES	CARBURETION TECHNOLOGY	1
AUTO REPAIR SERVICES	CENTER ST AUTO REPAIR & SALES	1
AUTO REPAIR SERVICES	CENTER STREET COLLISION	1
AUTO REPAIR SERVICES	DAVIS TRUCK TIRE REPAIR	1
AUTO REPAIR SERVICES	GCR	1
AUTO REPAIR SERVICES	GENES TOWING/AEL LLC	1
AUTO REPAIR SERVICES	GILCHRIST AUTO BODY SHOP	1
AUTO REPAIR SERVICES	HANA COLLISION AND AUTO BODY	1
AUTO REPAIR SERVICES	KEL TECH PLASTICS	1
AUTO REPAIR SERVICES	MAACO	1
AUTO REPAIR SERVICES	NW RADIATOR SHOP	1
AUTO REPAIR SERVICES	PHELPS TIRE FACTORY	2
AUTO REPAIR SERVICES	R & E ELECTRIC	2
AUTO REPAIR SERVICES	R & E ELECTRIC (ROMAINE ELECTRIC)	1
AUTO REPAIR SERVICES	RICHARDSON COATING	1
AUTO REPAIR SERVICES	RPM MOTORS AND STORAGE YARD	1
AUTO REPAIR SERVICES	SALATINO'S AUTO BODY SHOP	1
AUTO REPAIR SERVICES	SAM'S AUTO REPAIR	1
AUTO REPAIR SERVICES	SCOTTS AUTO REPAIR	1
AUTO REPAIR SERVICES	SERVICEKING COLLISION REPAIR CENTER	1
AUTO REPAIR SERVICES	SUPERVALUE MAINTENANCE GARAGE	1
AUTO REPAIR SERVICES	TACOMA AUTO SPA	4
AUTO REPAIR SERVICES	TACOMA CAR SALES LLC/SERGEY AUTOBODY	1
AUTO REPAIR SERVICES	THOROUGHbred COLLISION CENTER	3
AUTO REPAIR SERVICES	TITUS WILL AUTOBODY	2
AUTO REPAIR SERVICES	WALSH TRUCKING	2
AUTO REPAIR SERVICES	WALSH TRUCKING COMPANY	1
AUTO REPAIR SERVICES	ZYGGI'S AUTO SHOP	1
BANKS	KEY BANK	1
BANKS	TACOMA LONGSHOREMEN'S CREDIT UNION	1
BLDG MTRL FARM EQUIP RETAIL		2
BLDG MTRL FARM EQUIP RETAIL	AMB TOOLS & EQUIPMENT	1
BLDG MTRL FARM EQUIP RETAIL	ARCHITECTURAL WOODS	1
BLDG MTRL FARM EQUIP RETAIL	EWING PAINT	2
BLDG MTRL FARM EQUIP RETAIL	FIELDS PRODUCTS	5
BLDG MTRL FARM EQUIP RETAIL	GRAY'S LUMBER CO.	1

## Businesses with Non-Industrial Land Uses in M-1, M-2, and PMI Zones

BLDG MTRL FARM EQUIP RETAIL	GRAY LUMBER COMPANY	2
BLDG MTRL FARM EQUIP RETAIL	GRAYS LUMBER CO	3
BLDG MTRL FARM EQUIP RETAIL	JMK FIBER/LINK PETROLEUM	1
BLDG MTRL FARM EQUIP RETAIL	KITCHEN AND BATH	2
BLDG MTRL FARM EQUIP RETAIL	REHARVEST CENTER	1
BLDG MTRL FARM EQUIP RETAIL	SAVAGE WHOLESALE BLDG MATERIALS	4
BLDG MTRL FARM EQUIP RETAIL	TOOL TOWN	1
BUSINESS SERVICES		3
BUSINESS SERVICES	BEHIND CASCADE PRINTING	1
BUSINESS SERVICES	CASCADE PRINTING	1
BUSINESS SERVICES	DURHAM BUS BARN	7
BUSINESS SERVICES	IGLESIA CRISTIANA PENTECOSTES	1
BUSINESS SERVICES	MCGUIRE BEARING CO	1
BUSINESS SERVICES	SERV PRO	1
BUSINESS SERVICES	SIGNS BY TOMORROW	1
BUSINESS SERVICES	TERRA ORGANICS / NORTHWEST PROSPECTS ACADEMY	1
BUSINESS SERVICES	VENTURE CAPITAL	1
CAR WASH	CARWASH	1
CAR WASH	SPRAGUE AVE CAR WASH	1
CEMETERIES	MT VIEW CEMETARY	1
COMM LND WITH SFR		11
COMM LND WITH SFR	BLINER SMOKE SHOP	1
COMM LND WITH SFR	EBENEZERS ATTIC	1
COMM LND WITH SFR	HOUSE	2
COMM LND WITH SFR	VACANT SLOPING LAND	1
CONTRACTOR SERVICES		25
CONTRACTOR SERVICES	ADDISON CONSTRUCTION AND SUPPLY	2
CONTRACTOR SERVICES	ALL WAYS AIR CONTROL	1
CONTRACTOR SERVICES	AMERICAN CABLE SERVICE	1
CONTRACTOR SERVICES	AMERICAN CONSTRUCTION	1
CONTRACTOR SERVICES	ARMSTRONG TRANSFER (ROOFING)	1
CONTRACTOR SERVICES	BOULTON INSULATION & OFFICE	1
CONTRACTOR SERVICES	CAMCAL	1
CONTRACTOR SERVICES	CARPINITO BROS LANDSCAPE BARK	1
CONTRACTOR SERVICES	CASCADE ASPHALT PAVING CO	2
CONTRACTOR SERVICES	CHRISTIANS SPECIALIST AUTO REPAIR	1
CONTRACTOR SERVICES	CONCRETE TECHNOLOGY PRODUCT STORAGE	2
CONTRACTOR SERVICES	CONSTRUCTION ENTERPRISE CONTRACTORS INC.	1

## Businesses with Non-Industrial Land Uses in M-1, M-2, and PMI Zones

CONTRACTOR SERVICES	DREYERS ICE CREAM	1
CONTRACTOR SERVICES	EARTH TECH	1
CONTRACTOR SERVICES	ELECTRIC CONST CO	1
CONTRACTOR SERVICES	ELECTRIC WORKS & GROFF ELECTRIC	3
CONTRACTOR SERVICES	EXCEL ELECTRIC OF TACOMA	1
CONTRACTOR SERVICES	GENERAL MECHANICAL INC	1
CONTRACTOR SERVICES	HELIUM AND STUFF	1
CONTRACTOR SERVICES	IBEW LOCAL 483	1
CONTRACTOR SERVICES	J R REDING CO	1
CONTRACTOR SERVICES	KENAN ADVANTAGE	1
CONTRACTOR SERVICES	MADSEN ELECTRIC	1
CONTRACTOR SERVICES	MERCURIO HEATING & COOLING	1
CONTRACTOR SERVICES	MYER BROTHERS ROOFING & SUNBELT RENTALS	1
CONTRACTOR SERVICES	NEPHRON	1
CONTRACTOR SERVICES	NORTHWEST CONST MFG/INSPECTON TECHNOLOGY INC	1
CONTRACTOR SERVICES	PACIFIC ENVIRONMENTAL/INSPECTION TECHNOLOGY INC	1
CONTRACTOR SERVICES	PACIFIC RIM TRANSPORT INC	1
CONTRACTOR SERVICES	PENHALL CO	3
CONTRACTOR SERVICES	POLY CO	1
CONTRACTOR SERVICES	PORT OF TACOMA	1
CONTRACTOR SERVICES	PORT OF TACOMA/CONTAINER RECOVERY	1
CONTRACTOR SERVICES	PORT/FULL CONTAINER RECOVERY	2
CONTRACTOR SERVICES	PREMIER TRANSPORT	3
CONTRACTOR SERVICES	PURVIS CONSTRUCTION	1
CONTRACTOR SERVICES	RACEWAY TECHNOLOGY	1
CONTRACTOR SERVICES	RAINBOW INTERNATIONAL RESTORATION	3
CONTRACTOR SERVICES	REFRIGERATION UNLIMITED	1
CONTRACTOR SERVICES	REP INC	1
CONTRACTOR SERVICES	ROADWAY CONST	3
CONTRACTOR SERVICES	ROADWAY CONSTRUCTION	1
CONTRACTOR SERVICES	ROSEN SUPPLY STORAGE YARD	1
CONTRACTOR SERVICES	SCOTTS TRUCK EQUIP AND BODY STORAGE YARD	1
CONTRACTOR SERVICES	SOUND ROCK PRODUCTS	1
CONTRACTOR SERVICES	STACY PLUMBING	3
CONTRACTOR SERVICES	STORAGE YARD	3
CONTRACTOR SERVICES	TACOMA MONUMENTAL WORKS	1
CONTRACTOR SERVICES	WALRATH TRUCKING	2
CONTRACTOR SERVICES	WHITE CAP CONSRUCTION SUPPLY	1



## Businesses with Non-Industrial Land Uses in M-1, M-2, and PMI Zones

CONTRACTOR SERVICES	WINSUPPLY	1
CONTRACTOR SERVICES	WM. DICKSON CO	1
CONVEN STORE MAY HAVE GAS	NADIA DOBASHIS GROCERY	1
CREDIT UNIONS	SEAFARERS INTERNATIONAL UNION AFL-CIO	1
CREDIT UNIONS	SEAFARERS UNION BLDG	1
CU OPEN SPACE RCW 84.34 CURRENT USE	ALLENMORE GOLF COURSE	1
DENTAL SERVICES	BRIGHT NOW DENTAL	3
DRAINFLDS CATCH BASINS		1
DUPLEX 2 UNITS		5
ENTERTAINMENT BARS	EMERALD QUEEN CASINO	1
FAST FOOD	DOCKSIDE DONUTS AND ESPRESSO	1
FAST FOOD	LEDGENDZ DRIVE THRU	1
FIRE STATIONS	CITY OF TACOMA EAST F SUBSTATION	1
FIRE STATIONS	CITY OF TACOMA FIRE STATION #6	1
FIRE STATIONS	FIRE DEPARTMENT OFFICES AND TRAINING	1
FIRE STATIONS	TACOMA FIRE DEPT # 12	1
FIRE STATIONS	TACOMA FIRE DEPT TRAINING CENTER	2
FIRE STATIONS	TACOMA FIRE STATION # 15	2
FOURPLEX 4 UNITS		5
FUELING STATIONS	APP CARLOCK FUEL SITE	1
FUELING STATIONS	APP COMMERCIAL CFN FUELING STATION	3
FUELING STATIONS	CARDLOCKER FUELS DIESEL	1
GAS STATION CASHIER BOOTH		2
GAS STATION CASHIER BOOTH	CLASSIC MARBLE INTERIORS OFFICE AND WAREHOUSE	1
GAS STATION MINI MART	76 UNION STATION, C STORE/DELI/TERIYAKI	2
GAS STATION MINI MART	ARRCO/ AM/PM	1
GAS STATION MINI MART	CHEVRON STATION,CONVENIENCE STORE,CAR WASH	1
GAS STATION MINI MART	FLYING J TRAVEL PLAZA (TRUCK STOP)	2
GAS STATION MINI MART	MAXI-SPACE BLDG/ SHELL GAS STATION	1
GAS STATION MINI MART	UNION 76/GREEN BEAN JAVA	1
GAS STATION SERV GAR	CARD LOCK	1
GEN MERCHANDISE RETAIL TRADE		1
GEN MERCHANDISE RETAIL TRADE	ALPHABET PRESCHOOL	1
GEN MERCHANDISE RETAIL TRADE	CONTINENTAL REFRIGERATION & RESTAURANT EQUIPMENT	1
GEN MERCHANDISE RETAIL TRADE	DULUX PAINT	1
GEN MERCHANDISE RETAIL TRADE	EAST 72ND PLAZA	3
GEN MERCHANDISE RETAIL TRADE	I & L INTERNATIONAL LLC	2
GEN MERCHANDISE RETAIL TRADE	MINI PLAZA	1

## Businesses with Non-Industrial Land Uses in M-1, M-2, and PMI Zones

GEN MERCHANDISE RETAIL TRADE	SURE FIT CUSTOM SEAT COVERS	1
GEN MERCHANDISE RETAIL TRADE	WAR PONY INDIAN SMOKE SHOP	2
GEN WAREHOUSING STORAGE		66
GEN WAREHOUSING STORAGE	1625 CONDO LLC	1
GEN WAREHOUSING STORAGE	1625 CONDO UNIT 1	1
GEN WAREHOUSING STORAGE	A B HOWE WAREHOUSE	1
GEN WAREHOUSING STORAGE	A J JOHNSON CO	1
GEN WAREHOUSING STORAGE	AARONS MARINE SERVICE	2
GEN WAREHOUSING STORAGE	ABF	1
GEN WAREHOUSING STORAGE	ADAM STREET BUSINESS CENTER	3
GEN WAREHOUSING STORAGE	ADDISON CONSTRUCTION AND SUPPLY	1
GEN WAREHOUSING STORAGE	ADVANCE CABINETS/CENTURY RV/GILCHRIST SERVICE CENT	1
GEN WAREHOUSING STORAGE	AMERICAN WOODCRAFT	1
GEN WAREHOUSING STORAGE	ANIMAL FEED TRANSFER STATION	3
GEN WAREHOUSING STORAGE	ATLANTIC RELOCATION	2
GEN WAREHOUSING STORAGE	AUTO FX INC.	1
GEN WAREHOUSING STORAGE	AUTO REPAIR	1
GEN WAREHOUSING STORAGE	B&D INTERNATIONAL MOVING & STORAGE	1
GEN WAREHOUSING STORAGE	BELINA INTERIORS BLDG 2	1
GEN WAREHOUSING STORAGE	BOEDECKER CO	1
GEN WAREHOUSING STORAGE	BRADKEN	1
GEN WAREHOUSING STORAGE	CALBAG METALS CO/HERBERT CONSTRUCTION	1
GEN WAREHOUSING STORAGE	CANTEEN	1
GEN WAREHOUSING STORAGE	CARBIDE PROCESSORS	1
GEN WAREHOUSING STORAGE	CASCADE PRINT MEDIA	1
GEN WAREHOUSING STORAGE	CENTER STREET BUSINESS PARK	3
GEN WAREHOUSING STORAGE	CH MURPHY CLARK-ULLMAN INC	1
GEN WAREHOUSING STORAGE	CHAMI DESIGN INC	1
GEN WAREHOUSING STORAGE	CONSOLIDATED PRESS/WEBCRAFT UNITS A&B LONE STAR	2
GEN WAREHOUSING STORAGE	CONTAMINATED PUMP STATION # 12	1
GEN WAREHOUSING STORAGE	DECIBELS INC	1
GEN WAREHOUSING STORAGE	EVANGELICAL REFORMED CHURCH (TAXABLE)	1
GEN WAREHOUSING STORAGE	FIRST STUDENT BUS BARN	2
GEN WAREHOUSING STORAGE	FITTS JOHNSON POSTMAN STAIRS ECODISC	3
GEN WAREHOUSING STORAGE	GIG HARBOR BREWERY & TAP ROOM	1
GEN WAREHOUSING STORAGE	GOODWILL OUTLET STORE	1
GEN WAREHOUSING STORAGE	GRANITE AND TILE WORLD	1
GEN WAREHOUSING STORAGE	GULF MARINE	1

## Businesses with Non-Industrial Land Uses in M-1, M-2, and PMI Zones

GEN WAREHOUSING STORAGE	HOCKEY CENTER	1
GEN WAREHOUSING STORAGE	INTERCITY EXPRESS INC	1
GEN WAREHOUSING STORAGE	JOHNSTON CONSTRUCTION MASONRY CONTRACTOR	1
GEN WAREHOUSING STORAGE	JONES STEVEDORING CO	1
GEN WAREHOUSING STORAGE	LANZ CABINETS	1
GEN WAREHOUSING STORAGE	LEO FINNIGAN INC	1
GEN WAREHOUSING STORAGE	LONGS CUSTOM METAL CRAFT	1
GEN WAREHOUSING STORAGE	LOS COMPADRES DISTRIBUTING	1
GEN WAREHOUSING STORAGE	LUCKS FOOD DECORATING	2
GEN WAREHOUSING STORAGE	LYNDEN TRANSPORT/WORLD WIDE MOVERS	1
GEN WAREHOUSING STORAGE	M STREET INDUSTRIAL PARK	1
GEN WAREHOUSING STORAGE	M STREET INDUSTRIAL PARK BALLEW'S	1
GEN WAREHOUSING STORAGE	MACMILLAN PIPER INC	1
GEN WAREHOUSING STORAGE	MADISON BUSINESS PARK II	1
GEN WAREHOUSING STORAGE	MULTIPLE SERVICE SHOPS, AUTO BODY, PAINTING,ETC	1
GEN WAREHOUSING STORAGE	NICHOLS TRUCKING	1
GEN WAREHOUSING STORAGE	NOR-WESTERN DIST CO AND CAR WASH	1
GEN WAREHOUSING STORAGE	NORTHWEST WIRE ROPE & SLING	1
GEN WAREHOUSING STORAGE	NW WAREHOUSE INC.	2
GEN WAREHOUSING STORAGE	PACIFIC CONTAINER CORP	2
GEN WAREHOUSING STORAGE	PACIFIC CUSTOM MILLWORK	1
GEN WAREHOUSING STORAGE	PACIFIC CUSTOM MILLWORK & GLOBAL IMPORT/EXPORT	1
GEN WAREHOUSING STORAGE	PACIFIC KITCHENS	1
GEN WAREHOUSING STORAGE	PACIFIC PALLETS AND CRATE	1
GEN WAREHOUSING STORAGE	PARAMOUNT SUPPLY CO.	1
GEN WAREHOUSING STORAGE	PEPSI CO	1
GEN WAREHOUSING STORAGE	PEPSI WAREHOUSE	1
GEN WAREHOUSING STORAGE	PERFORMANCE RADIATOR	5
GEN WAREHOUSING STORAGE	PERFORMANCE RADIATOR DISTRIBUTION CENTER	1
GEN WAREHOUSING STORAGE	PIONEER BUILDER'S SUPPLY	3
GEN WAREHOUSING STORAGE	PORT BUSINESS PORT	1
GEN WAREHOUSING STORAGE	PORT COMMERCE CTR LAND FOR BLDG 1 8888876930	1
GEN WAREHOUSING STORAGE	PORT COMMERCE CTR LAND FOR BLDG 2 8888876940	1
GEN WAREHOUSING STORAGE	PORT COMMERCE CTR LAND FOR BLDG 3 8888876950	1
GEN WAREHOUSING STORAGE	PORT COMMERCE CTR TI #18	1
GEN WAREHOUSING STORAGE	PORT OF TACOMA	2
GEN WAREHOUSING STORAGE	PORT/#8930	1
GEN WAREHOUSING STORAGE	PORT/MACMILLAN-PIPER/K&M/CALBAG METALS	1

## Businesses with Non-Industrial Land Uses in M-1, M-2, and PMI Zones

GEN WAREHOUSING STORAGE	PORTSIDE IND PARK CHIHULY STUDIO & SOLO CUP	1
GEN WAREHOUSING STORAGE	POSITIVE APPROACH DOG TRAINING AND DAY CARE	1
GEN WAREHOUSING STORAGE	PREMIUM MOTORS	1
GEN WAREHOUSING STORAGE	ROMAN MEAL	1
GEN WAREHOUSING STORAGE	RWC	1
GEN WAREHOUSING STORAGE	SHED BUILDERS	1
GEN WAREHOUSING STORAGE	SIMPSON LANDING	1
GEN WAREHOUSING STORAGE	SIMPSON LANDING BLDG A	1
GEN WAREHOUSING STORAGE	SIMPSON LANDING BLDG C	1
GEN WAREHOUSING STORAGE	SIMPSON LANDING BUILDING B	1
GEN WAREHOUSING STORAGE	SIX ROBBLEES	1
GEN WAREHOUSING STORAGE	SMITH WESTERN COMPANY	1
GEN WAREHOUSING STORAGE	SOUND SLEEP MANUFACTURING	2
GEN WAREHOUSING STORAGE	SOUTH INTERMODAL YARD	1
GEN WAREHOUSING STORAGE	SSA MARINE	1
GEN WAREHOUSING STORAGE	STAR MOVING & STORAGE	2
GEN WAREHOUSING STORAGE	STAR MOVING AND STORAGE	1
GEN WAREHOUSING STORAGE	STELLAR INDUSTRIAL SUPPLY	1
GEN WAREHOUSING STORAGE	SYSTEM 99 TRUCK TERMINAL & ADD'L PARKING	1
GEN WAREHOUSING STORAGE	TACOMA IRONWORKS	1
GEN WAREHOUSING STORAGE	TACOMA PROPELLER	1
GEN WAREHOUSING STORAGE	TACOMA RC RACEWAY	1
GEN WAREHOUSING STORAGE	TACOMA SCREW PRODUCTS	1
GEN WAREHOUSING STORAGE	THE AUTO SHOP	1
GEN WAREHOUSING STORAGE	THE CRONIN COMPANY	2
GEN WAREHOUSING STORAGE	THE NORTHWEST COMPANY	1
GEN WAREHOUSING STORAGE	TMS FREIGHT LINES	1
GEN WAREHOUSING STORAGE	TRIMAX,INC	2
GEN WAREHOUSING STORAGE	TRUCK-RAIL HANDLING	1
GEN WAREHOUSING STORAGE	TWINS SYSTEM/PROP DEVELOP MANAGEMENT/CASCADE PLAST	1
GEN WAREHOUSING STORAGE	USF REDDAWAY	1
GEN WAREHOUSING STORAGE	WAGNER DEVELOPMENT	1
GEN WAREHOUSING STORAGE	WESTERN BUILDERS SUPPLY	1
GEN WAREHOUSING STORAGE	WHIRLWIND SERVICES	1
GEN WAREHOUSING STORAGE	WOODLAND PATTERN INC	5
GEN WAREHOUSING STORAGE	WORLD WIDE MOVERS	1
GOVERNMENTAL SERVICES		4
GOVERNMENTAL SERVICES	CITY OF FIFE	2

## Businesses with Non-Industrial Land Uses in M-1, M-2, and PMI Zones

GOVERNMENTAL SERVICES	CITY OF TACOMA	1
GOVERNMENTAL SERVICES	INDIAN TRUST LAND	1
GOVERNMENTAL SERVICES	PIERCE COUNTY PUBLIC SERVICES	1
GOVERNMENTAL SERVICES	PORT OF TACOMA	5
GOVERNMENTAL SERVICES	PORT/EVERGREEN TERMINAL	2
GOVERNMENTAL SERVICES	PORT/MAERSK/SEALAND	5
GOVERNMENTAL SERVICES	PUBLIC OBSERVATION TOWER	1
GOVERNMENTAL SERVICES	SOUTH TACOMA WELL 11A	1
GOVERNMENTAL SERVICES	TACOMA SCHOOLS	2
GOVERNMENTAL SERVICES	TAGRO	1
GRNBELT COMMON AREAS		3
GRNBELT COMMON AREAS	PORT OF TACOMA	1
HOTELS/MOTELS	LA QUINTA	1
HOTELS/MOTELS	TACOMA CENTER MOTEL	2
INSTITUTIONAL LODGING	SEA MAR COMMUNITY HEALTH CENTER	1
INSTITUTIONAL LODGING	SEA MAR COMMUNITY HEALTH CTR	1
INSTITUTIONAL LODGING	SEA MAR COMMUNITY HEALTH CTR (PLAZA HALL)	3
LNDRY & DRY CLEANING SERV	AMERICAN LINEN	1
LNDRY & DRY CLEANING SERV	HEALTHCARE LAUNDRY	2
LNDRY & DRY CLEANING SERV	HEALTHCARE LAUNDRY SERVICES	2
LNDRY & DRY CLEANING SERV	OVERALL LAUNDRY	2
LNDRY & DRY CLEANING SERV	STEINER CORP AMERICAN LINEN	3
LNDRY & DRY CLEANING SERV	STEINER CORP PARKING AMERICAN LINEN	1
LNDRY & DRY CLEANING SERV	SUPERIOR LINEN #1-Y-1	1
MARINAS	HYLEBOS MARINA - "B" & "C" DOCKS - SHOPS	1
MARINAS	HYLEBOS MARINA -- "D" DOCK	1
MARINAS	MODUTECH MARINE INC	1
MARINE CRAFT TRANSPORTATION		4
MARINE CRAFT TRANSPORTATION	FOSS LAUNCH & TUG CO	1
MARINE CRAFT TRANSPORTATION	MARINE INDUSTRIES NORTHWEST, INC.	1
MARINE CRAFT TRANSPORTATION	PORT EARLEY BUSINESS CENTER	1
MARINE CRAFT TRANSPORTATION	PORT OF TACOMA	5
MARINE CRAFT TRANSPORTATION	PORT OF TACOMA/ WAREHOUSES	1
MARINE CRAFT TRANSPORTATION	PORT/TOTEM OCEAN TRAILER EXPANSION TERMINAL	4
MARINE CRAFT TRANSPORTATION	TRI STAR	1
MEDICAL OFFICES SERVICES	MEDICAL BUILDING - EYE CLINIC	1
MEDICAL OFFICES SERVICES	PORT CLINIC	1
MILITARY BASES	USA/NAVY & NAVAL RESERVE	1

## Businesses with Non-Industrial Land Uses in M-1, M-2, and PMI Zones

MINI WAREHOUSING		3
MINI WAREHOUSING	HOSMER SELF STORAGE	1
MINI WAREHOUSING	MR VAN GARD MINI STORAGE	1
MINI WAREHOUSING	MR VAN GARD SELF STORAGE	1
MINI WAREHOUSING	NALLEY VALLEY SELF STORAGE	2
MINI WAREHOUSING	ORCHARD ST SELF STORAGE	1
MINI WAREHOUSING	ORCHARD STREET SELF STORAGE	1
MINI WAREHOUSING	PORTLAND AVENUE SELF STORAGE	2
MINI WAREHOUSING	PUBLIC STORAGE	2
MISC OFFICE SPACE		10
MISC OFFICE SPACE	AMERICAN RED CROSS	1
MISC OFFICE SPACE	CENTRAL OFFICE BUILDING	1
MISC OFFICE SPACE	DEPARTMENT OF CORRECTIONS-LEASED PARKING	2
MISC OFFICE SPACE	DEPARTMENT OF CORRECTIONS-LEASED TRAINING CENTER	1
MISC OFFICE SPACE	DEPT OF CORRECTIONS, COMMUNITY JUSTICE CENTER	1
MISC OFFICE SPACE	FARMERS INSURANCE	1
MISC OFFICE SPACE	FIRST AMERICAN PLAZA	1
MISC OFFICE SPACE	PACIFIC CATARACT & LASER INSTITUTE	1
MISC OFFICE SPACE	REALITY HOMES INC / SECURITY FENCE INC / JENCO	1
MISC OFFICE SPACE	SEALAND-DISPATCH / PUGET SOUND TRUCK LINES INC	1
MISC OFFICE SPACE	TRI STATE ROOFING	1
MISC OFFICE SPACE	WORLD TRADE CENTER	1
MISC SERVICES		11
MISC SERVICES	1BEW LOCAL 76 LAND/COOPERATIVE EXTENTION	2
MISC SERVICES	AMERICAN BLDG MAINTENANCE	1
MISC SERVICES	AMVETS POST #1	2
MISC SERVICES	APPLIED INDUSTRIAL TECHNOLOGIES	1
MISC SERVICES	ECOINSULATE NORTHWEST	1
MISC SERVICES	FIRST STUDENT BUS BARN	3
MISC SERVICES	FIRST STUDENT BUS BARN - OFFICE	1
MISC SERVICES	IBEW LOCAL 76 BLDG/COOPERATIVE EXTENTION	1
MISC SERVICES	LONG PEST CONTROL	1
MISC SERVICES	LONGSHOREMEN DISPATCH & UNION HALL	1
MISC SERVICES	MARINE FLOATS SHOP / FIRST STUDENT BUS GARAGE	1
MISC SERVICES	O'MEALY SPINE & POSTURE REHABILITATION	1
MISC SERVICES	PORT/WASHINGTON UNITED TERMINALS	6
MISC SERVICES	POSITIVE APPROACH DOG SERVICES	1
MISC SERVICES	RAIN CITY PLAZA	1

## Businesses with Non-Industrial Land Uses in M-1, M-2, and PMI Zones

MISC SERVICES	SOUND BATTERY CO	1
MISC SERVICES	ST VINCENT DEPAUL	1
MISC SERVICES	TACOMA SEAFARER'S CENTER	1
MISC SERVICES	TRIAD MACHINERY CONTRACTOR AND TIMBER	1
MULTI FAM APTS 5 UNITS OR MORE		4
MULTI FAM APTS 5 UNITS OR MORE	APARTMENTS	3
MULTI FAM APTS 5 UNITS OR MORE	EL POPO APTS	1
MULTI FAM APTS 5 UNITS OR MORE	HAZELWOOD TERRACE	3
MULTI FAM APTS 5 UNITS OR MORE	UNION 43 APT	2
MULTI FAM APTS 5 UNITS OR MORE	WILCOX APARTMENTS	1
MULTI FAM APTS 5 UNITS OR MORE	WILCOX APTS	2
MULTI FAM APTS 5 UNITS OR MORE	WINWOOD PARK APARTMENTS	1
NGB COMMUNITY SC		1
NGB COMMUNITY SC	EMERSON COURTYARD	1
NURSING CONVALESCENT HOSPITALS	ORCHARD PARK ASSISTED LIVING	1
OFF INSURANCE REAL ESTATE FINANCE	APEX ENGINEERING	1
OFF INSURANCE REAL ESTATE FINANCE	EBENEEZERS ANNEX	1
OFF INSURANCE REAL ESTATE FINANCE	FIRST AMERICAN PLAZA	1
OLDER BUSINESS DIST	JOHNSON TILE & STONE	1
OP PROP RR RIGHT OF WAY		20
OP PROP RR RIGHT OF WAY	B-N OPERATING PROP RR TRACK R/W	1
OP PROP RR RIGHT OF WAY	B.N.S.F	1
OP PROP RR RIGHT OF WAY	BN	1
OP PROP RR RIGHT OF WAY	BN-OPT 9	1
OP PROP RR RIGHT OF WAY	BN OPERATING PROP	1
OP PROP RR RIGHT OF WAY	BN OPTG	1
OP PROP RR RIGHT OF WAY	BN OPTG PROP	1
OP PROP RR RIGHT OF WAY	BNSF RAILROAD	3
OP PROP RR RIGHT OF WAY	BURLINGTON NORTHERN	1
OP PROP RR RIGHT OF WAY	BURLINGTON NORTHERN RR	3
OP PROP RR RIGHT OF WAY	BURLINGTON NORTHERN SF RR	1
OP PROP RR RIGHT OF WAY	BURLINGTON RAILROAD	1
OP PROP RR RIGHT OF WAY	CITY OF TACOMA	2
OP PROP RR RIGHT OF WAY	NPRY FREIGHT YARD	1
OP PROP RR RIGHT OF WAY	OPERATING PROPERTY	1
OP PROP RR RIGHT OF WAY	ORE-WASH RAIL ROAD	2
OP PROP RR RIGHT OF WAY	PORT OF TACOMA	3
OP PROP RR RIGHT OF WAY	PORT OF TACOMA/RAILROAD SWITCHING AREA	1

## Businesses with Non-Industrial Land Uses in M-1, M-2, and PMI Zones

OP PROP RR RIGHT OF WAY	SOUTH TACOMA PUMP STATION	1
OP PROP RR RIGHT OF WAY	TAC EASTERN	1
OP PROP RR RIGHT OF WAY	TACOMA CAR SHOP	1
OP PROP RR RIGHT OF WAY	TACOMA RAIL	2
OP PROP RR RIGHT OF WAY	UNION PACIFIC	1
OP PROP RR RIGHT OF WAY	UNION PACIFIC CORP	2
OTHER PUB ASSEMBLY	TACOMA DOME	4
OTHER RESIDENTIAL		3
OTHER RESOURCE PROD	PORT/TOTEM OCEAN TRAILER EXPANSION TERMINAL	1
OTHER RETAIL TRADE	BOEDECKER CO	1
OTHER RETAIL TRADE	FIRESIDE HEARTH & HOME	1
OTHER RETAIL TRADE	PACIFIC WELDING	1
OTHER RETAIL TRADE	PACIFIC WELDING ACCOUNT/PARKING	1
OTHER RETAIL TRADE	PACIFIC WELDING SUPPLIES	1
OTHER RETAIL TRADE	SACRED PLANT MEDICINE	1
OTHER RETAIL TRADE	TACOMA SCREW PRODUCTS	1
OTHER RETAIL TRADE	TACOMA SCUBA / ELECTRIC COMPANY	1
OTHER UNDEVEL LAND		1
PARKS		1
PARKS	CITY OF TACOMA	1
PARKS	GOG-LE-HI-TE WETLANDS	14
PARKS	GOG-LE-HI-TE WETLANDS #2_	1
PARKS	PLACE OF CIRCLING WATERS	2
PERSONAL SERVICES	DON'S CARPET SHOP/SARCO SUPPLY	1
PRISONS	NW DETENTION CENTER TI #45	10
PRISONS	NW DETENTION CENTER TI #45 PARKING LOT	1
PROFESSIONAL SERVICES		2
PROFESSIONAL SERVICES	LARSON & FRIND	1
PROFESSIONAL SERVICES	OZANICH INSURANCE BROKERS LTD	1
PROFESSIONAL SERVICES	PUGLIA ENGINEERING	2
PROFESSIONAL SERVICES	REMEDY STAFFING	1
PROFESSIONAL SERVICES	STERLING REFERENCE LABORATORIES	1
PROFESSIONAL SERVICES	WEBER CHIROPRACTIC CLINIC	2
REC ACTIVITIES		1
REC ACTIVITIES	TACOMA SOCCER CENTER PARKING	1
REC ACTIVITIES	THE SOCCER CENTER	1
REFRIG WAREHOUSE	VERSACOLD - 8888879370	1
RELIGIOUS SERVICES		1



## Businesses with Non-Industrial Land Uses in M-1, M-2, and PMI Zones

RELIGIOUS SERVICES	EVANGELICAL REFORMED CHURCH (EXEMPT)	1
RELIGIOUS SERVICES	TACOMA YOUTH FOR CHRIST	1
RELIGIOUS SERVICES	UNITY CHRISTIAN MINISTRIES	1
RENTAL EQUIP AUTO TRUCK	AA BERGS RENT IT	1
RENTAL EQUIP AUTO TRUCK	BUNCE EQUIP RENTAL	3
RENTAL EQUIP AUTO TRUCK	PENSKE	1
RENTAL EQUIP AUTO TRUCK	RYDER TRUCKS	3
RENTAL EQUIP AUTO TRUCK	UNITED RENTALS	1
REPAIR SERVICES		6
REPAIR SERVICES	56TH STREET TIRES	1
REPAIR SERVICES	ANDYS AUTO REPAIR	1
REPAIR SERVICES	ASHLEY'S TIRE SHOP	1
REPAIR SERVICES	CANTRELLS BODY SHOP	1
REPAIR SERVICES	CAR CARE CENTER	1
REPAIR SERVICES	COAST CRANE CO	1
REPAIR SERVICES	HOLLYWOOD BOAT & MOTOR CO	1
REPAIR SERVICES	LUCKY SILVER CAFE/TAVERN/GARAGE	2
REPAIR SERVICES	LUNDE ELECTRIC MOTOR SERVICE	1
REPAIR SERVICES	MARVIN SHEET METAL	1
REPAIR SERVICES	MD MARINE ELECTRIC	2
REPAIR SERVICES	NC KAYAKS/NOVUS COMPOSITES	1
REPAIR SERVICES	PHILS AUTO CARE	3
REPAIR SERVICES	PUGET SOUND INT'L INC / LEASEHOLD	1
REPAIR SERVICES	PUGET SOUND SURGICAL	1
REPAIR SERVICES	TACOMA MARINE REPAIR	1
REPAIR SERVICES	THE PIPE GUYS	2
REPAIR SERVICES	VANCE LIFT TRUCK	1
REPAIR SERVICES	WEST COAST SAWS	2
RESTAURANT	CHIEFTAIN CAFE	2
RESTAURANT	GREAT WALL BUFFET	1
RESTAURANT	MOCTEZUMA RESTAURANT	1
RESTAURANT	NORTHWEST LUMPYA	2
RESTAURANT	PEGASUS RESTAURANT	1
RESTAURANT	SAM'S CAFE	1
RETAIL HOME FURNISHINGS	FIRST AMERICAN PLAZA - ABBEY CARPET	1
RETAIL STAND ALONE		2
RETAIL STAND ALONE	56TH ST TATTOO	1
RETAIL STAND ALONE	DANCE COLLECTION	1

## Businesses with Non-Industrial Land Uses in M-1, M-2, and PMI Zones

RETAIL STAND ALONE	LACQUER DISTRIBUTORS INC (LDI)	1
RETAIL STAND ALONE	PABCO	1
RETAIL STAND ALONE	PAPER FACTORY PARTY WORLD	1
RETIREMENT HOME		1
RETIREMENT HOME	CASCADE PARK GARDENS	3
RETIREMENT HOME	THE VILLAGE SENIOR LIVING	1
RR PASSENGER TERMINALS		1
RR PASSENGER TERMINALS	NPKY FREIGHT HOUSE	1
SEC SCHOOLS 7 TO 12	OAKLAND ALTERNATIVE SCHOOL	1
SEC SCHOOLS 7 TO 12	OAKLAND SCHOOL	1
SINGLE FAMILY DWELLING		55
SINGLE FAMILY DWELLING	PACIFIC MARITIME ASSOC / LEASEHOLD	1
STREET RIGHT OF WAY		5
STREET RIGHT OF WAY	PORT OF TACOMA	1
TAVERNS	JAVA JIVE	2
TAVERNS	VALLEY TAVERN	1
TAVERNS	WEST END PUB & GRILL	1
TRANSIT RR RIGHT OF WAY		4
TRANSIT RR RIGHT OF WAY	FUTURE SOUND TRANSIT STATION	1
TRANSIT RR RIGHT OF WAY	PORT OF TACOMA	1
TRIPLEX 3 UNITS		1
UNKNOWN		4
UNKNOWN	OFF CENTER UNITS	1
USED CAR LOTS ONLY RETAIL	A RENT A CAR	1
USED CAR LOTS ONLY RETAIL	ALS USED CARS	3
USED CAR LOTS ONLY RETAIL	AUTO OUTLET	1
USED CAR LOTS ONLY RETAIL	AUTO VALUE CENTER	1
USED CAR LOTS ONLY RETAIL	AUTOMOTIVE SALES	1
USED CAR LOTS ONLY RETAIL	BRUCE TITUS PRE OWNED VEHICLES	1
USED CAR LOTS ONLY RETAIL	G&A & CAMPOS AUTO REPAIR, THE JUNKYARD ROCK CLUB	1
USED CAR LOTS ONLY RETAIL	G&A AUTO REPAIR/ CAMPOS AUTO REPAIR	1
USED CAR LOTS ONLY RETAIL	LOS AMIGOS REST & GROC, KIRBY,SPRINT,OFF,REAR STOR	1
USED CAR LOTS ONLY RETAIL	STARVING STUDENT MOVERS	1
USED CAR LOTS ONLY RETAIL	TNT AUTOMITE	1
VEHICLE TRANSPORTATION	D & B TRUCKING	1
VEHICLE TRANSPORTATION	PORT/CSX INTERMODAL YARD	1
VEHICLE TRANSPORTATION	TRUCK WASH ESPRESSO/DELI/YARD SPACE	1
VETERINARIAN SERVICES		3

## Businesses with Non-Industrial Land Uses in M-1, M-2, and PMI Zones

VETERINARIAN SERVICES	BLUE PEARL VETERINARY CLINIC	1
VETERINARIAN SERVICES	BUTTON VETERINARY CLINIC	1
VETERINARIAN SERVICES	HUMANE SOCIETY WILLIAM GAZECKI	1
VETERINARIAN SERVICES	JONES ANIMAL HOSPITAL	1
VETERINARIAN SERVICES	PIERCE CO ANIMAL CLINIC	1
VETERINARIAN SERVICES	THE ANIMAL EMERGENCY CLINIC	1
VOC TRADE SCHOOLS		1
VOC TRADE SCHOOLS	BATES MOHLER CAMPUS	1
WAREHOUSE CONDO		6
WAREHOUSE CONDO	5121 BURLINGTON LLC	1
WAREHOUSE CONDO	ADAMS PLAZA	2
WAREHOUSE CONDO	BURLINGTON WAY LLC	1
WAREHOUSE CONDO	CLEAN PROPERTIES LLC	2
WAREHOUSE CONDO	INNOVATIVE HARDWOOD	1
WAREHOUSE CONDO	NW FABRICATORS	1
WAREHOUSE CONDO	OFF CENTER UNITS CONDO	32
WAREHOUSE CONDO	OLYMPIC MACHINE & WELDING	1
WAREHOUSE CONDO	VISUAL OPTIONS	1
WHOLESALE TRADE		11
WHOLESALE TRADE	AMERICAN DRY ICE	1
WHOLESALE TRADE	AMERICAN MEDICAL & RENTAL	2
WHOLESALE TRADE	ARCHITECTURAL WOODS	2
WHOLESALE TRADE	ARCHITECTURAL WOODS #3	1
WHOLESALE TRADE	ARCHITECTURAL WOODS BUILD #2	1
WHOLESALE TRADE	ARCHITECTURAL WOODS INC BLDG 1	1
WHOLESALE TRADE	BOKAYS TO GO	1
WHOLESALE TRADE	CAMPBELL COX FLOOR & ACTION DANCE	1
WHOLESALE TRADE	CAPITAL LUMBER	2
WHOLESALE TRADE	CED ELECTRIC SUPPLY	1
WHOLESALE TRADE	CENTER ELECTRIC	1
WHOLESALE TRADE	CENTER ELECTRIC & TOOL	1
WHOLESALE TRADE	CORNELL PLUMBING	1
WHOLESALE TRADE	COSTCO	1
WHOLESALE TRADE	F & L PARTS PLUS AUTO PARTS	1
WHOLESALE TRADE	FASTCO INC	1
WHOLESALE TRADE	FNW	1
WHOLESALE TRADE	FOUNDERS CHOICE CABINETS	4
WHOLESALE TRADE	FRMR CONTAM GENERAL CHEMICAL PROPERTY	1

## Businesses with Non-Industrial Land Uses in M-1, M-2, and PMI Zones


WHOLESALE TRADE	GRAYBAR ELECTRIC	1
WHOLESALE TRADE	GREENBRIER RAIL SERVICE	1
WHOLESALE TRADE	MCKINNEY TRAILER RENTALS	1
WHOLESALE TRADE	MOTION INDUSTRIES	1
WHOLESALE TRADE	MULTI TENANT OFFICE-WAREHOUSE	1
WHOLESALE TRADE	NORTH COAST ELECTRIC	3
WHOLESALE TRADE	NORTHERN FISH PRODUCTS	1
WHOLESALE TRADE	NORTHWEST ETCH TECHNOLOGY	1
WHOLESALE TRADE	PACIFIC AERO SPACE & E/ URBAN ACCESSORIES	1
WHOLESALE TRADE	PACIFIC FLUIDS	1
WHOLESALE TRADE	PALLET SERVICES	2
WHOLESALE TRADE	PORT/STORAGE YARD & OFFICE	1
WHOLESALE TRADE	RECOVERY 1 INC	1
WHOLESALE TRADE	REX PEGG FABRICS INC	1
WHOLESALE TRADE	ROSEN PLUMBING SUPPLY	2
WHOLESALE TRADE	S & J FOODS	1
WHOLESALE TRADE	SEA PRODUCKS INC	1
WHOLESALE TRADE	SEATTLE VPC	1
WHOLESALE TRADE	SIMON METALS LLC TI #29	1
WHOLESALE TRADE	SPECTRA LABORATORIES	1
WHOLESALE TRADE	STAR RENTALS	2
WHOLESALE TRADE	STEELER DRYWALL SUPPLY	1
WHOLESALE TRADE	SUPER VALU MAIN DIST CENTER AND OFFICES	1
WHOLESALE TRADE	SUPERVALU HOLDINGS	1
WHOLESALE TRADE	SUPERVALU MEAT WHSE,OFFICES,&TRUCK PARKING	1
WHOLESALE TRADE	SUPERVALUE HOLDINGS	2
WHOLESALE TRADE	TACOMA AUTOMOTIVE DIST INC	3
WHOLESALE TRADE	TACOMA ELECTRIC SUPPLY INC	1
WHOLESALE TRADE	TRI ARC ELECTRIC	1
WHOLESALE TRADE	US SHEET METAL INC	1
WHOLESALE TRADE	WASHINGTON FLORAL SERVICES	1
WHOLESALE TRADE	WILLIAMS OIL FURNACE SERVICE CO	2



# Businesses with Industrial Land Uses\* in Tacoma, WA

March 2017


\*Uses determined to be Industrial detailed in "Land Use Key"

 Zones where industrial land uses are permitted  
(CIX, DCC, DMU, M-1, M-2, PMi, and WR)

## Businesses by state land use code - Refer to supplementary key for business names

 Business name is "null"





### Manufacturing

-  21-Food and kindred products
-  23-Apparel and other finished products made from fabrics, leather, and similar materials
-  24-Lumber and wood products (except furniture)
-  25-Furniture and fixtures
-  26-Paper and allied products
-  27-Printing and publishing
-  28-Chemicals
-  29-Petroleum refining and related industries
-  32-Stone, clay, and glass products
-  33-Primary metal industries
-  34-Fabricated metal products
-  35-Prof. scientific, & controlling instruments; photographic & optical goods; watch & clocks mfg
-  39-Miscellaneous manufacturing

### Transportation, Communication, and Utilities

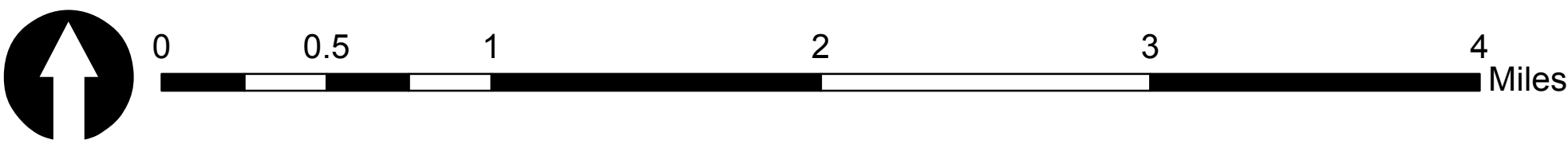
-  48-Utilities
-  49-Other transportation, communication, and utilities not classified elsewhere

### Resource Production and Extraction

-  81-Agriculture (not classified under current use law)
-  82-Agriculture related activities
-  85-Mining and related services
-  86-Marijuana grow operations

### Undeveloped Land and Water Areas

-  91-Undeveloped land



**KEY**

**Businesses with Industrial Land Uses in Tacoma, WA**

Label Number	Business Name	Land Use Description
1	7 SEAS BREWING COMPANY	MISC MFG
2	ACCOUNTED WITH 0011 DAYCARE PLAY AREA	COMM VAC LAND
3	ACKERLEY COMMERCIAL SIGN	COMM LND WITH IMPROV LAND VAL ONLY
3	ACKERLEY COMMERCIAL SIGN	COMM VAC LAND
4	ACKERLY BILLBOARD HERE	COMM LND WITH IMPROV LAND VAL ONLY
5	ACKERLY COMMUNICATION	COMM VAC LAND
6	ADDITIONAL LAND FOR 0080	COMM VAC LAND
7	ADJACENT TO FREEWAY ENTRANCE	COMM VAC LAND
8	AEP SPAN - TI #8	FAB METAL PRODUCTS
9	AIRGAS NOR-PAC	CHEMICAL MFG
10	AIRGAS NOR-PAC INC	CHEMICAL MFG
11	ALASKA ST RESERVOIR	UTILITIES
12	ALL WAYS AIR CONTROL PARKING	COMM VAC LAND
13	ALL WAYS AIR CONTROL REAR PARKING	COMM VAC LAND
14	ALLENMORE MEDICAL PLAZA PHASE 2	COMM VAC LAND
15	AMERICAN PETROLEUM ENVIRONMENTAL SVC	PETRO INDUSTRIES
16	ANDREWS FIXTURE CO	MISC MFG
17	ANDY'S WOOD FUNITURE	FURNITURE MFG
18	APP	PETRO INDUSTRIES
19	ASTRO WRECKING AND SALVAGE YARD 2	VAC LND MAJOR PROBLEM
20	ATLAS TI #5 HILLSIDE BUFFER	PRIM METAL INDUSTRIES
21	ATLAS FOUNDRY TI#5 PARKING LOT & EMPL SHOWER BLDG	PRIM METAL INDUSTRIES
22	ATLAS TI #5 - CASTING YARD	PRIM METAL INDUSTRIES
23	ATLAS TI #5 - TRUCK GARAGE & SERVICE	PRIM METAL INDUSTRIES
24	ATLAS TI #5 HILLSIDE BUFFER	PRIM METAL INDUSTRIES
25	ATLAS TI #5 (BOBCO PATTERN MFG LEASE)	PRIM METAL INDUSTRIES
26	ATLAS TI #5 EQUIP & TRUCK SERVICE CTR	PRIM METAL INDUSTRIES
27	ATLAS TI #5 HILLSIDE BUFFER	PRIM METAL INDUSTRIES
28	ATLAS TI#5 EQUIPMENT YARD	PRIM METAL INDUSTRIES
29	AUTOMATED SYSTEMS OF TACOMA	FAB METAL PRODUCTS
30	BAXTER AUTO PARTS	RES LND WITH COMM BUILDING
31	BAY ENGINE	FAB METAL PRODUCTS
32	BAYSIDE GARDEN APARTMENTS	COMM VAC LAND
33	BELINA INTERIORS	MISC MFG
34	BENNETT INDUSTRIES	PRIM METAL INDUSTRIES
35	BILLBOARD	VAC INDUSTRIAL LAND
36	BN INDUST PARK	CHEMICAL MFG

# KEY

## Businesses with Industrial Land Uses in Tacoma, WA

36	BN INDUST PARK	VAC INDUSTRIAL LAND
37	BONNEVILLE POWER	UTILITIES
38	BONNEVILLE POWER ADMIN	UTILITIES
39	BRADKEN-ATLAS TI #5	PRIM METAL INDUSTRIES
40	BRADKEN -ATLAS TI #24	FAB METAL PRODUCTS
41	BRADKEN -ATLAS TI #24_____	FAB METAL PRODUCTS
42	BRESHON MACHINE	MISC MFG
43	BROWN & HALEY	FOOD MFG
44	BUDDHIST CHURCH	VACANT LAND UNDEVELOPED
45	BUFFELEN WOOD WORKING TI #12__	LUMBER & WOOD MFG
46	BUFFELEN WOOD WORKING TI ACCT #12_____	LUMBER & WOOD MFG
47	BUFFELEN WOODWORKING TI #12	LUMBER & WOOD MFG
48	BURLINGTON NO S TAC SWAMP	VAC INDUSTRIAL LAND
49	CARAUSTAR/TACOMA PAPERBOARD - TI #77	PAPER PROD MFG
50	CARAUSTAR/TACOMA PAPERBOARD - TI #77_____	PAPER PROD MFG
51	CARLISLE TRUCKING	OTHER TRANS UTILITIES
52	CENTRAL SUBSTATION	UTILITIES
53	CENTURY CONDOMINIUMS	COMM VAC LAND
54	CHIHULY SHOP	MISC MFG
55	CHIHULY WAREHOUSE	STONE/CLAY/GLASS MFG
56	CHRIS MARINE	FAB METAL PRODUCTS
57	CITY DUMP	UTILITIES
58	CITY GLASS & UPHOLSTERY	COMM LND WITH IMPROV LAND VAL ONLY
59	CITY LIGHT SUB STATION & YARD	UTILITIES
60	CITY OF TAC PUMP STATION AND PARK	UTILITIES
61	CITY OF TACOMA	COMM VAC LAND
61	CITY OF TACOMA	UTILITIES
61	CITY OF TACOMA	VAC INDUSTRIAL LAND
61	CITY OF TACOMA	VAC LND MAJOR PROBLEM
61	CITY OF TACOMA	VACANT LAND UNDEVELOPED
62	CITY OF TACOMA-PUBLIC WORKS	VAC INDUSTRIAL LAND
63	CITY OF TACOMA PUBLIC WORKS	VAC LND MAJOR PROBLEM
64	CITY OF TACOMA RECOVERY & TRANSFER CENTER	UTILITIES
64	CITY OF TACOMA RECOVERY & TRANSFER CENTER	VACANT LAND UNDEVELOPED
65	CITY OF TACOMA SEWAGE PLANT	UTILITIES
66	CITY OF TACOMA SEWER PLANT	UTILITIES
67	CITY OF TACOMA SUB STATION	UTILITIES
68	CITY OF TACOMA SUBSTATION	UTILITIES



# KEY

## Businesses with Industrial Land Uses in Tacoma, WA

69	CITY OF TACOMA WATER	VAC INDUSTRIAL LAND
70	CITY OF TACOMA WATER RESERVOIR	UTILITIES
71	CITY OF TACOMA/FILLED BY LIGE DICKSON CO	COMM VAC LAND
72	CITY ROAD PLANT	PETRO INDUSTRIES
73	CITY/INTERMODAL YARD	OTHER TRANS UTILITIES
74	COAST ENGINE LAND LEASE PORT OF TACOMA	FAB METAL PRODUCTS
75	COASTLINE FABRICATION	FAB METAL PRODUCTS
76	COLE SCREENPRINT INC	PRINTING PUBLISHING
77	COMMUNITY MONTESSORI	COMM VAC LAND
78	CONCRETE TECHNOLOGY ù TI #14	STONE/CLAY/GLASS MFG
79	CONOCO PHILLIPS	PETRO INDUSTRIES
80	CONOCOPHILLIPS	PETRO INDUSTRIES
81	CONTINENTAL GRAIN / PORT OF TACOMA	MISC MFG
82	CROFT SUBSTATION	UTILITIES
83	CUSHMAN SUB STATION	UTILITIES
84	CUSTOM TURNING MACHINE SHOP	MISC MFG
85	DARLING INTERNATIONAL INC TI #16	CHEMICAL MFG
86	DARLING INTERNATIONAL INC TI #16	CHEMICAL MFG
87	DICKSON WALLER RD GRAVEL PIT	QUARRY SAND ROCK
88	DOMINOS	COMM VAC LAND
89	DOUG'S BOAT TOPS	MISC MFG
90	DRY BOX USA CONTAINERS	LUMBER & WOOD MFG
91	EDGECLIFF APTS	COMM VAC LAND
92	EDMAN COMPANY	LUMBER & WOOD MFG
93	EDUCATOR BUILDING	MISC MFG
94	ELECTRIC PANEL HOUSE	VAC INDUSTRIAL LAND
95	ELECTRICAL SUBSTATION EXEMPT	UTILITIES
96	EMERALD SERVICES TI #84	CHEMICAL MFG
97	EMERSON COURTYARD II	COMM VAC LAND
98	ENDICOTT COFFEE ROASTERS	FOOD MFG
99	ENERGY CONTROL CENTER	UTILITIES
100	ENVIOS A MEXICO/WAREHOUSE/COVERED AREA	MISC MFG
101	FAITH EVANG PRESBY CHURCH	COMM VAC LAND
102	FAWCETT HOUSE	COMM VAC LAND
103	FEED COMMODITIES	AG RELATED ACTIVITIES
104	FIAT OF TACOMA	VAC INDUSTRIAL LAND
105	FIRST CHRISTIAN CHURCH	COMM VAC LAND
106	FOREST MARKETING ENTERPRISES	LUMBER & WOOD MFG



# KEY

## Businesses with Industrial Land Uses in Tacoma, WA

107	FORMER HOSMER ELECTRIC SUBSTAION	VAC INDUSTRIAL LAND
108	FORMER HOSMER ELECTRIC SUBSTATION	VAC INDUSTRIAL LAND
109	FORZA COFFEE, MILEPOST, ETC.	COMM VAC LAND
110	FRED TEBB & SONS TI #19	LUMBER & WOOD MFG
111	FRED TEBB AND SONS TI #19/APP PETROLEUM	LUMBER & WOOD MFG
112	FUTON MANUFACTURING	LUMBER & WOOD MFG
113	GARDEN & OUTBUILDING	VACANT LAND UNDEVELOPED
114	GARDEN OF EATIN FOR ANTIQUE SANDWICH SHOP	COMM VAC LAND
115	GARFIELD GULCH	COMM VAC LAND
116	GENERAL METALS TI #20	FAB METAL PRODUCTS
116	GENERAL METALS TI #20	PRIM METAL INDUSTRIES
117	GENERAL PLASTIC MFG CO	CHEMICAL MFG
118	GEORGIA PACIFIC GYPSUM TI #22	STONE/CLAY/GLASS MFG
119	GILCHRIST AUTO	APPAREL & FINISH MFG
120	GLACIER NORTHWEST - TACOMA TI #87	QUARRY SAND ROCK
121	GLOBE MACHINE	MISC MFG
122	GLOBE MACHINE û TI #21	FAB METAL PRODUCTS
123	GOVE SUBSTATION	UTILITIES
124	GRAYMONT WESTERN (CONT LIME) û TI # 15	STONE/CLAY/GLASS MFG
125	GREEN THUMB COMMUNITY GARDEN	COMM VAC LAND
126	GREEN THUMB GARDEN SUPPLY SUPER STORE	HORTICULTURAL SPECIALTIES
127	HABITAT FOR HUMANITY	PRINTING PUBLISHING
128	HAMPTON LBR	VAC INDUSTRIAL LAND
129	HANGER INC. PROSTHETICS & ORTHOTICS	SCI INSTR PHOTO OPTICAL WATCH MFG
130	HARMON F S BLDGS 1 - 4	APPAREL & FINISH MFG
131	HIGHLAND SUBSTATION	UTILITIES
132	HILLSDALE LUMBER /EARTH WISE ARCHITECTURAL SALVAGI	LUMBER & WOOD MFG
133	HILLSIDE	COMM VAC LAND
134	HILLSIDE CITY OF TACOMA	VAC LND MAJOR PROBLEM
135	HILLSIDE CITY OF TACOMA	VAC LND MAJOR PROBLEM
136	HILLTOP SUBSTATION	UTILITIES
137	HOLROYD BATCH PLANT	MINING ACTIVITIES
138	HOLROYD/NIELSEN PACIFIC	QUARRY SAND ROCK
139	HOYA CORP TI #37	SCI INSTR PHOTO OPTICAL WATCH MFG
140	IGLESIA HISPANA	MISC MFG
141	IND LAND AIRPORT S TAC SWAMP	VAC INDUSTRIAL LAND
142	INTERMODAL YARD	OTHER TRANS UTILITIES
143	ITI	MISC MFG

## KEY

### Businesses with Industrial Land Uses in Tacoma, WA

144	J W BROWER HEATING AND AIR CONDITIONING	FAB METAL PRODUCTS
145	J&G MARINE SUPPLY/MASON MARINE SERVICES INC	FAB METAL PRODUCTS
146	JACK'S AUTO REPAIR	PRIM METAL INDUSTRIES
147	JARDEEN	COMM VAC LAND
148	JESSE ENGINEERING	FAB METAL PRODUCTS
149	JOHNNY'S ENTERPRISES	FOOD MFG
150	JOHNSON-COX PRINTERS	PRINTING PUBLISHING
151	JOHNSONS CANDY	FOOD MFG
152	JOHNSONS MILLWORK	LUMBER & WOOD MFG
153	JONES CHEMICAL	CHEMICAL MFG
154	JUNGLE FEVER EXOTICS	AG NOT CURRENT USE
155	KAISER ALUMINUM (FORMER)	VAC INDUSTRIAL LAND
156	KLEEN BLAST	STONE/CLAY/GLASS MFG
157	KUSTOM MATERIAL LAMINATES & CODEL INC	LUMBER & WOOD MFG
158	KUSTOM MATERIAL LAMINATES & CODEL INC _____	LUMBER & WOOD MFG
159	LACKERMAYER TOOL AND GAUGE	FAB METAL PRODUCTS
160	LEGACY RENOVATIONS	FURNITURE MFG
161	LIANGA PACIFIC û TI #31	LUMBER & WOOD MFG
162	LIANGA PACIFICû TI #31	LUMBER & WOOD MFG
163	LIGE DICKSON CO	COMM VAC LAND
163	LIGE DICKSON CO	VAC INDUSTRIAL LAND
164	LIGE DICKSON VAC LAND ASSEMBLGE	COMM VAC LAND
165	LM DIGITAL	HORTICULTURAL SPECIALTIES
166	MADISON BUSINESS PARK II	VAC INDUSTRIAL LAND
167	MAHONEY GREEN USE I-502	HORTICULTURAL SPECIALTIES
168	MANKE LUMBER	VACANT LAND UNDEVELOPED
169	MANKE LUMBER TI #35	LUMBER & WOOD MFG
169	MANKE LUMBER TI #35	VAC INDUSTRIAL LAND
170	MARCATO	COMM VAC LAND
171	MARINE FLOATS	VAC INDUSTRIAL LAND
172	MARTIN LUTHER KING HOUSING DEV	COMM VAC LAND
173	MARTINAC SHIPBUILDING TI #36	FAB METAL PRODUCTS
174	MASON MIDDLE SCHOOL	COMM LND WITH IMPROV LAND VAL ONLY
175	MC CARVER VILLAGE II PH II	VACANT LAND UNDEVELOPED
176	MCFARLAND CASCADE TI #13	LUMBER & WOOD MFG
177	MCGUIRE BEARING CO	FAB METAL PRODUCTS
178	MERRILL GARDENS MEMORY CARE FACILITY	VACANT LAND UNDEVELOPED
179	METRO PARK DISTRICT	COMM VAC LAND

# KEY

## Businesses with Industrial Land Uses in Tacoma, WA

180	METROPOLITAN TOWERS - PHASE III	COMM VAC LAND
181	MICROWAVE TOWER	COMM VAC LAND
182	MT TAHOMA HIGH SCHOOL	COMM VAC LAND
183	MULTI FAMILY UNITS	COMM VAC LAND
184	MULTICARE UTILITY BLDG	UTILITIES
185	NALLEY VALLEY SELF STORAGE	VAC INDUSTRIAL LAND
186	NICHOLSON ENGINEERING	FAB METAL PRODUCTS
187	NIELSEN PACIFIC LTD	COMM VAC LAND
188	NIELSON PACIFIC LTD	VAC INDUSTRIAL LAND
189	NISQUALLY SUB STATION	UTILITIES
190	NORDLUND	MISC MFG
191	NORDLUND BOAT COMPANY	MISC MFG
192	NORTHWEST PIPE & STEEL	MISC MFG
193	NORTHWEST STEEL AND PIPING	FAB METAL PRODUCTS
194	NORTHWEST WOODWORKING	MARIJUANA GROW OPERATIONS
195	NU TREAD INC	MISC MFG
196	NUSTAR ENERGY	PETRO INDUSTRIES
197	O P BURLINGTON NORTHERN	VAC INDUSTRIAL LAND
198	OAKTREE GARDENS SUPPLY,PARKING& RETENTION POND	COMM VAC LAND
199	OLD GLOBE COMPANY LLC	FAB METAL PRODUCTS
200	OLD TIME WOOD WORK (FORMER)	MISC MFG
201	OLD TOWN PARK	COMM VAC LAND
202	OLIN CHLOR ALKALI	CHEMICAL MFG
203	OLYMPIC CHEMICAL CORP/PAC NORTHERN OIL	CHEMICAL MFG
204	OPTG PROP	COMM VAC LAND
205	ORION MARINE	LUMBER & WOOD MFG
206	P W PIPE	MISC MFG
207	PABCO BUILDING PRODUCTS LLC TI #46	MISC MFG
208	PACIFIC BREWING LLC	COMM VAC LAND
209	PACIFIC NW PROCESSING	PETRO INDUSTRIES
210	PACIFIC NW TERMINALS TALLOW TANK FARM	PETRO INDUSTRIES
211	PACIFIC SUNSET	COMM VAC LAND
212	PARK	COMM VAC LAND
213	PARKING	COMM VAC LAND
214	PARKING STRUCTURE	COMM LND WITH IMPROV LAND VAL ONLY
215	PECK FIELD PARKING	COMM VAC LAND
216	PHOENIX ENVIRONMENTAL	PETRO INDUSTRIES
217	PIERCE CO TAX TITLE	VAC INDUSTRIAL LAND

# KEY

## Businesses with Industrial Land Uses in Tacoma, WA

218	PIERCE COUNTY ANNEX WEST	PRINTING PUBLISHING
219	PIONEER BUILDER'S SUPPLY	VAC INDUSTRIAL LAND
220	PJ HUMMEL AND CO	FAB METAL PRODUCTS
221	PLUMB SIGNS	MISC MFG
222	PLY-TRIM WEST POLY TRIM	LUMBER & WOOD MFG
223	PLY-TRIM WEST POLY TECH OVERLAYS	LUMBER & WOOD MFG
224	PLY TRIM WEST	LUMBER & WOOD MFG
225	POINT RUSTON	COMM VAC LAND
226	PORT OF TACOMA	IND LND WITH IMPROV LAND VAL ONLY
226	PORT OF TACOMA	OTHER TRANS UTILITIES
226	PORT OF TACOMA	VAC INDUSTRIAL LAND
227	PORTLAND AT ST PAUL LLC	VAC INDUSTRIAL LAND
228	PORTLAND AVENUE NURSERY	HORTICULTURAL SPECIALTIES
229	PRAXAIR	CHEMICAL MFG
230	PRECISION MACHINE WORKS - TACOMA TI #52	FAB METAL PRODUCTS
231	PRECISION PATTERN WORKS	FAB METAL PRODUCTS
232	PREMIER PLASTICS	MISC MFG
233	PROCTOR STATION	COMM VAC LAND
234	PROPOSED HILLSDALE HEIGHTS DEVELOPMENT	COMM VAC LAND
235	PUGET SOUND CASKET	MISC MFG
236	PUGET SOUND CASKET PARKING	MISC MFG
237	PUGET SOUND CASKETPARKING	MISC MFG
238	PUGET SOUND ENERGY	UTILITIES
239	PUYALLUP TRIBE OF INDIANS ELECTRONIC BILLBOARD SIT	COMM LND WITH IMPROV LAND VAL ONLY
240	QUICKRETE	MISC MFG
240	QUICKRETE	STONE/CLAY/GLASS MFG
241	QWEST SERVICE SHOP	OTHER TRANS UTILITIES
242	RAIL TO TRAIL	COMM VAC LAND
243	RAILROAD RIGHT OF WAY	OTHER TRANS UTILITIES
244	RAINIER PLYWOOD	LUMBER & WOOD MFG
245	RAS GRANITE & MARBLE	STONE/CLAY/GLASS MFG
246	RESIDUAL	VACANT LAND UNDEVELOPED
247	REVCHEM PLASTICS INC	CHEMICAL MFG
248	ROSEMOUNT PLACE	VACANT LAND UNDEVELOPED
249	RPM MOTORS AND STORAGE YARD	IND LND WITH IMPROV LAND VAL ONLY
250	S TAC SWAMP	COMM VAC LAND
250	S TAC SWAMP	VAC INDUSTRIAL LAND
251	SAYBR CONSTRUCTION	MISC MFG

**KEY****Businesses with Industrial Land Uses in Tacoma, WA**

252	SCHNEIDER & SIMPSON SHEET METAL	FAB METAL PRODUCTS
253	SCHULTZ CABINET SHOP	FURNITURE MFG
254	SCOTT & FROM CO	FAB METAL PRODUCTS
255	SEA PAC	COMM VAC LAND
256	SEARS SERVICE CENTER BUILDING	MISC MFG
257	SIGN BOARD ONLY	COMM VAC LAND
258	SILVER CLOUD	COMM VAC LAND
259	SIMPSON LANDING	IND VAC LND SP ENVIR APPR FILED
260	SITECRAFTING	MISC MFG
261	SO TACOMA PUMP STATION	UTILITIES
262	SOUND ENERGY SYSTEMS & SOUND ELECTRONICS	MISC MFG
263	SOUND TRANSIT SERVICE GARAGE (EXEMPT)	OTHER TRANS UTILITIES
264	SOUTH TACOMA SWAMP	VAC INDUSTRIAL LAND
265	SPERRY MILL DOCK	OTHER TRANS UTILITIES
266	SPINNING HEADS	HORTICULTURAL SPECIALTIES
267	SPRINT SWITCH CENTER FACILITY	OTHER TRANS UTILITIES
268	ST JOSEPH HOSPITAL	UTILITIES
269	STADIUM SUB STATION	UTILITIES
270	STADIUM THRIFTWAY PARKING	COMM VAC LAND
271	STAR ICE & FUEL	FOOD MFG
272	STAR RENTALS	VAC INDUSTRIAL LAND
273	STERICYCLE	PETRO INDUSTRIES
274	STREICH BROS	FAB METAL PRODUCTS
275	STRIP RETAIL	COMM VAC LAND
276	STROM ENTERPRISES	FOOD MFG
277	SUB-STATION	UTILITIES
278	SUBWAY RESTAURANT AND SEAFOOD SALES	FOOD MFG
279	SUNRISE EARLY EDUCATION CENTER	COMM VAC LAND
280	SUNRISE RIDGE APTS	RES LND WITH IMPROV LAND VAL ONLY
281	SUNSET PLAZA CONDOMINIUM	VACANT LAND UNDEVELOPED
282	SUPER CELL LLC	CHEMICAL MFG
283	SUPERLON PLASTICS	CHEMICAL MFG
284	SWISS IRON WORKS	FAB METAL PRODUCTS
285	T-TOWN SCREEN PRINT/DW UPHOLSTERY	APPAREL & FINISH MFG
286	TACOMA BOX	MISC MFG
287	TACOMA CHRISTIAN REFORMED COMMUNITY CHURCH	VACANT LAND UNDEVELOPED
288	TACOMA CITY LIGHT	UTILITIES
289	TACOMA CITY LIGHT SUB STATION, EXEMPT	UTILITIES

## KEY

### Businesses with Industrial Land Uses in Tacoma, WA

290	TACOMA CITY WATER/PORTLAND AVE RESERVOIR	UTILITIES
291	TACOMA DESIGN MARKET	FAB METAL PRODUCTS
292	TACOMA FIXTURE COMPANY	FURNITURE MFG
293	TACOMA INDUSTRIAL PARK	LUMBER & WOOD MFG
294	TACOMA JOONG-ANG PRES CHURCH	COMM VAC LAND
295	TACOMA METALS	FAB METAL PRODUCTS
295	TACOMA METALS	PRIM METAL INDUSTRIES
296	TACOMA MUNICIPAL WATER WORKS	COMM LND WITH IMPROV LAND VAL ONLY
296	TACOMA MUNICIPAL WATER WORKS	IND LND WITH IMPROV LAND VAL ONLY
296	TACOMA MUNICIPAL WATER WORKS	UTILITIES
297	TACOMA MUNICIPAL WATER WORKS SOUTH TACOMA PUMP	UTILITIES
298	TACOMA PUBLIC UTILITIES	UTILITIES
299	TACOMA RECYCLE	MISC MFG
300	TACOMA SCREW PRODUCTS	FAB METAL PRODUCTS
300	TACOMA SCREW PRODUCTS	VAC LND MAJOR PROBLEM
301	TACOMA STEEL SUPPLY	FAB METAL PRODUCTS
302	TACOMA TENT & AWNING	MISC MFG
303	TACOMA/TACOMA BELT LINE RAILROAD	OTHER TRANS UTILITIES
304	TACOMA/TACOMA BELTLINE RAILWAY	OTHER TRANS UTILITIES
305	TAHOMA INDIAN CENTER	COMM LND WITH IMPROV LAND VAL ONLY
306	TAM ENGINEERING INDUSTRIAL (VARIOUS RENTALS)	FAB METAL PRODUCTS
307	TARGA SOUND TERMINAL BOOSTER PUMP STATION	PETRO INDUSTRIES
308	TARGA SOUND TERMINAL OFFICE	PETRO INDUSTRIES
309	TARGA SOUND TERMINAL TI #57	PETRO INDUSTRIES
310	TARGA SOUND TERMINAL TI #57	PETRO INDUSTRIES
311	TARGA SOUND TERMINAL TI# 57	PETRO INDUSTRIES
312	TARGA SOUND TERMINAL TI#57	PETRO INDUSTRIES
313	TARGA TI #57	PETRO INDUSTRIES
314	THE BRONZE WORKS/THE WORKS FINE ART GALLERY	PRINTING PUBLISHING
315	THE PUFF & STUFF KRONIC CONNECTION	HORTICULTURAL SPECIALTIES
316	TITUS WILL	COMM VAC LAND
317	TOOL GAGE & MACHINE WORKS INC & PMP	FAB METAL PRODUCTS
318	TOOL GAUGE & MACHINE WORKS & PMP	FAB METAL PRODUCTS
319	TOOL GAUGE & MACHINE WORKS INC & PMP	FAB METAL PRODUCTS
320	TOOL GAUGE & MACHINE WORKS INC& PMP	FAB METAL PRODUCTS
321	TOOL GAUGE AND MACHINE WORKS INC& PMP	FAB METAL PRODUCTS
322	TOWN PUMP PARKING LOT	COMM VAC LAND
323	TPT US LIMITED	LUMBER & WOOD MFG

# KEY

## Businesses with Industrial Land Uses in Tacoma, WA

324	TR B STORM SEWER	UTILITIES
325	TR F OPEN SPACE	UTILITIES
326	TRI ARC ELECTRIC	HORTICULTURAL SPECIALTIES
327	TRI PAK RELOAD, INC	LUMBER & WOOD MFG
328	TRI STATE ROOFING PARKING	VAC INDUSTRIAL LAND
329	TROGER ENTERPRISES	PRINTING PUBLISHING
330	TUTHILL CORP CABLE CRAFT DIVISION	FAB METAL PRODUCTS
331	U OF W	COMM VAC LAND
332	U OFW	COMM VAC LAND
333	U S BANK	COMM VAC LAND
334	UND 1/3 INTEREST	VACANT LAND UNDEVELOPED
335	UND 1/6 INTEREST	VACANT LAND UNDEVELOPED
336	UNION AVENUE SUBSTATION	UTILITIES
337	UNION PACIFIC RR	OTHER TRANS UTILITIES
338	UPTON STUDIO	COMM LND WITH IMPROV LAND VAL ONLY
339	US OIL & REFINING - TI #62	PETRO INDUSTRIES
339	US OIL & REFINING - TI #62	PRIM METAL INDUSTRIES
340	US OIL WATERFRONT - TI #63	PETRO INDUSTRIES
341	USA BONNEVILLE POWER ADMIN	UTILITIES
342	USA TRUST PUYALLUP INDIAN TRIBE	VAC INDUSTRIAL LAND
343	UW PARKING LOT	COMM VAC LAND
344	VAC LAND	VAC INDUSTRIAL LAND
345	VACANT	COMM VAC LAND
346	VACANT COMM LAND	COMM VAC LAND
347	VACANT COMMERCIAL LAND	COMM VAC LAND
348	VACANT INDUSTRIAL LAND	VAC INDUSTRIAL LAND
349	VACANT LAND	COMM VAC LAND
350	VACANT LAND - TACOMA SCHOOL DISTRICT	COMM VAC LAND
351	VACANT LAND COMMUNITY GARDEN	COMM VAC LAND
352	VACANT LAND PARCEL	COMM VAC LAND
353	VACANT LOT	COMM VAC LAND
353	VACANT LOT	VAC INDUSTRIAL LAND
354	VALUE 4 SIGN ADVERTIZING	COMM VAC LAND
355	VCT (VENEER CHIP TRANSFER)	OTHER TRANS UTILITIES
356	VIKING SUPPLY	MISC MFG
357	VIKING SUPPLY SHIPPING AREA	MISC MFG
358	WAPATO SUBSTATION	UTILITIES
359	WATER RESERVOIR	UTILITIES

## KEY

### Businesses with Industrial Land Uses in Tacoma, WA

360	WATER RESERVOIR - 26' STRIP OF LAND	UTILITIES
361	WATER TOWER	UTILITIES
362	WATER TOWER - CITY OF TACOMA	UTILITIES
363	WATER TREATMENT PLANT	UTILITIES
364	WEST COAST GROCERY	HORTICULTURAL SPECIALTIES
365	WESTERN MACHINE WORKS	FAB METAL PRODUCTS
366	WESTPAC OWNERSHIP	COMM VAC LAND
367	WESTROCK KRAFT MILL TI #54	LUMBER & WOOD MFG
367	WESTROCK KRAFT MILL TI #54	PAPER PROD MFG
368	WILLARD SCHOOL PLAYGROUND	COMM LND WITH IMPROV LAND VAL ONLY
369	WORLD OF WEED / APACHE6	HORTICULTURAL SPECIALTIES
370	X-CEL FEEDS - TI #66	FOOD MFG
371	YELLOW CAB CO/LOWERY AUTO SALES	MISC MFG